

CAMP DAVID

COWORKING LOOKS DIFFERENT HERE

Camp David Coworking at Industry City is more than a coworking space; it's an ecosystem where professionals come to grow and businesses flourish. Every aspect of our workspace is crafted with intention, from ergonomic furniture to ambient lighting, ensuring a comfortable and supportive work environment.

At Camp David, our members find value in the ease of networking, sharing ideas, and the opportunities that coalesce in our shared spaces.





CAMP DAVID COWORKING

Anthom
DESIGN HOUSE

BROOKLYN
MAGAZINE

bse
GLOBAL

edit
NEW YORK

cause*
matter

CAVA



CHESS AT THREE
EARLY CHILDHOOD CHESS

FR & Co.

Hanshow

BROOKLYN, NEW YORK
LEX & HUDSON
INTERIORS

the LOVE
LAND
foundation

WR—GHT

INDUSTRY CITY

JOEY POPE, DIRECTOR OF MEMBERSHIP
e. joey@thecampdavid.com | p. 412.417.6698

CHLOE MARTIN, LEASING MANAGER
e. cmartin@industrycity.com | p. 347.417.8415

JHODI DUNKLEY, COMMUNITY MANAGER
e. jdunkley@industrycity.com | p. 347.232.6587



CAMP DAVID

MEMBER BENEFITS



FURNISHED WORKSPACES
DESKS, STORAGE + MORE



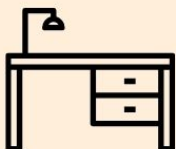
CONTENT STUDIO
SOUNDPROOF + PRIVATE



CONCIERGE OFFICE
MANAGER ON SITE



COFFEE SERVICE



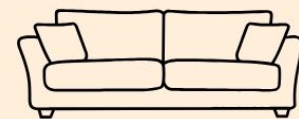
DEDICATED DESKS
STARTING AT \$500



SPACE FOR HOSTING EVENTS



MAKERSPACE WITH
MATERIALS & TOOLS



LIBRARY LOUNGES
SOFT SEATING FOR
WORK + BREAKS

INDUSTRY CITY

JOEY POPE, DIRECTOR OF MEMBERSHIP
e. joey@thecampdavid.com | p. 412.417.6698

CHLOE MARTIN, LEASING MANAGER
e. cmartin@industrycity.com | p. 347.417.8415

JHODI DUNKLEY, COMMUNITY MANAGER
e. jdunkley@industrycity.com | p. 347.232.6587

MEMBERSHIP

Camp David offers special rates for leases over 6 months. Membership includes full-access to all floors, amenities and programming.

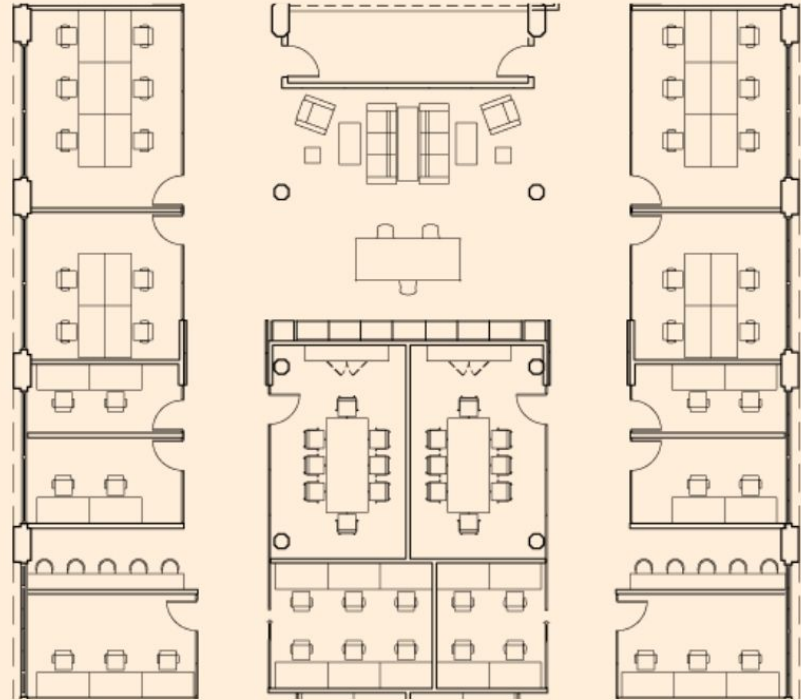
PRIVATE OFFICES Starting at \$1,500/month
ASSIGNED DESKS Starting at \$600/month

OFFICE

- Soundproofed private office
- Furnished oversized desk space
- Multi-function Printer & Copier
- Pantry & Prep Kitchen
- Bookable Conference Rooms
- Floating Membership for PT Employees at a Discounted Rate

AMENITIES

- Concierge & Guest Management
- Courtyard with Wifi
- Mail Services
- Makerspace & Photography Suite
- Educational Programming & Workshops



GROUND FLOOR

Camp David's Ground Floor lounge includes a warm entryway and event check-in desk, modular soft seating, movable library tables, a fully equipped cafe and bar area, and two adjacent boardrooms available for separate bookings. Lined with glass doors, the space opens to a large courtyard.

The Ground Floor is an optimal space for conferences, panels, workshops, and company off-sites.

First floor floating work lounge memberships starting at \$300 / month.

AREA

- 7,500 SQ. FT

CAPACITY

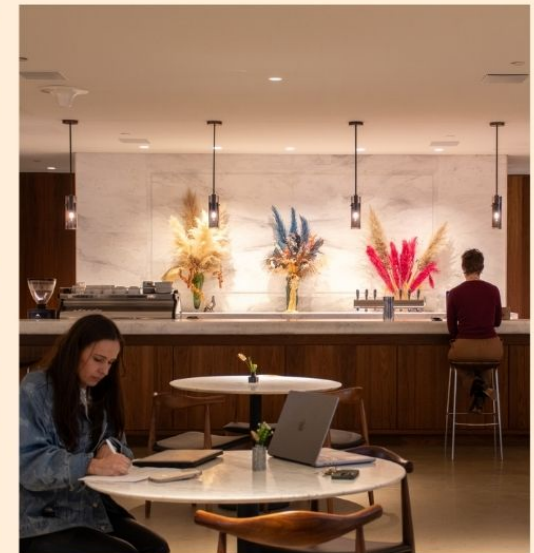
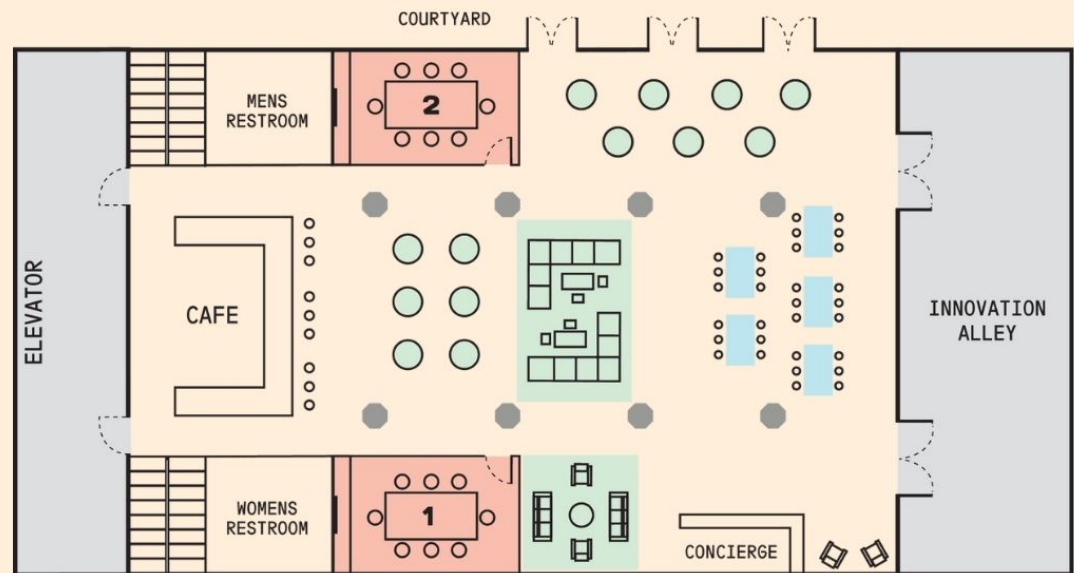
- 250 Standing
- 150 Seated

AMENITIES

- Full Wet Bar with Under-Counter Refrigerators
- Courtyard Access
- Loading Dock
- Dimmable Lighting
- Ample Natural Sunlight

AV & TECHNOLOGY

- Surround Sound Speaker System
- TV & Projection Display Options
- Wireless & Handheld Microphones
- PA Speaker System Available



MAKERSPACE

The Makerspace is located on Camp David's lower level and houses a professional suite for product photography, a workshop and tool wall, and textile studio with industrial sewing machines. Primed for hosting panels, screenings, and hands-on workshops, the Makerspace is accessible from the Ground Floor. An adjacent large boardroom and lounge are also available for separate bookings.

AREA

- 6,000 SQ. FT

CAPACITY

- 120 Standing
- 120 Seated

AMENITIES

- Seating Rental
- Dimmable Lighting
- Work Desks
- Lounge Seating

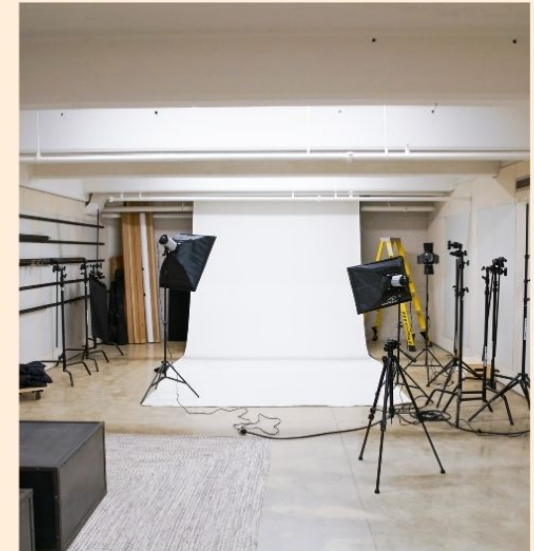
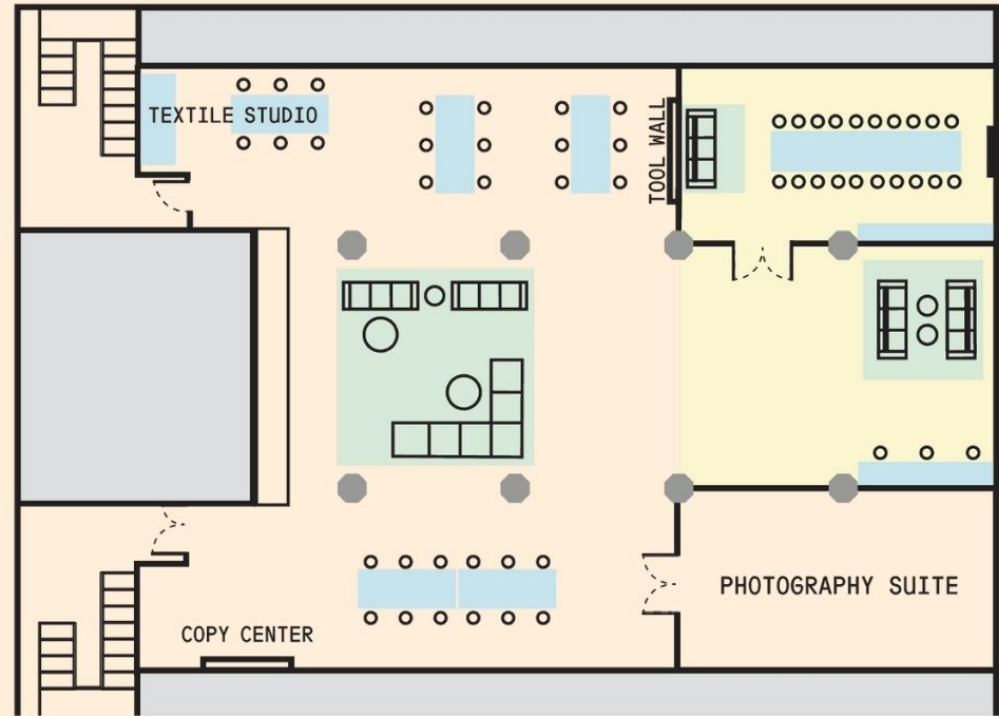
ADDITIONAL RENTABLE SPACE

- Meeting Room (1)

AV & TECHNOLOGY (INCLUDED)

- Surround Sound Speaker System
- TV & Projection Display Options
- Wireless & Handheld Microphones
- PA Speaker System Available
- Printing Station

ON-CAMPUS CATERING AVAILABLE



BOARDROOMS

The Boardrooms are located on Camp David's full-service Ground Floor. Light-filled and well-appointed with presentation and conferencing capabilities, the boardrooms are private and ideal for meetings, workshops, off-sites, and lunches.

**For groups exceeding 10 people, larger boardrooms are available. Please contact us for more information.*

AREA

- 250 SQ. FT

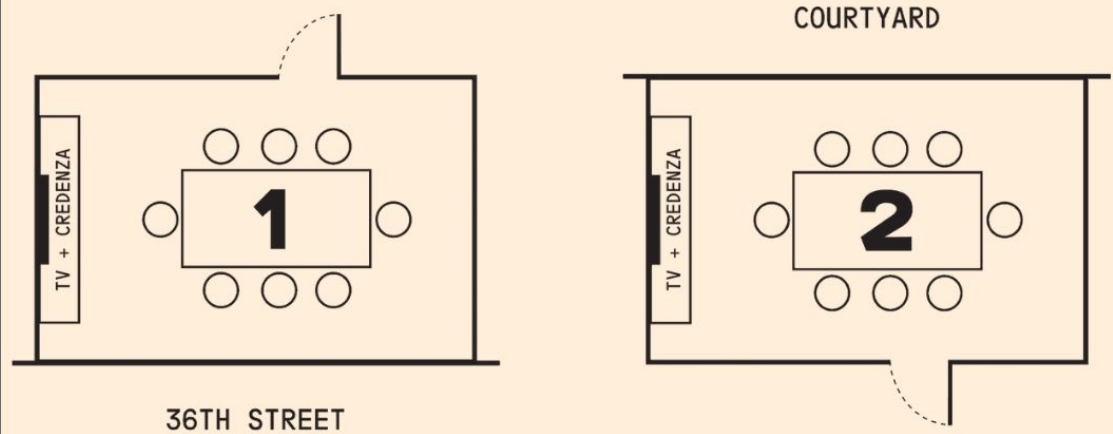
CAPACITY

- Seats up to 12

AV & TECHNOLOGY (INCLUDED)

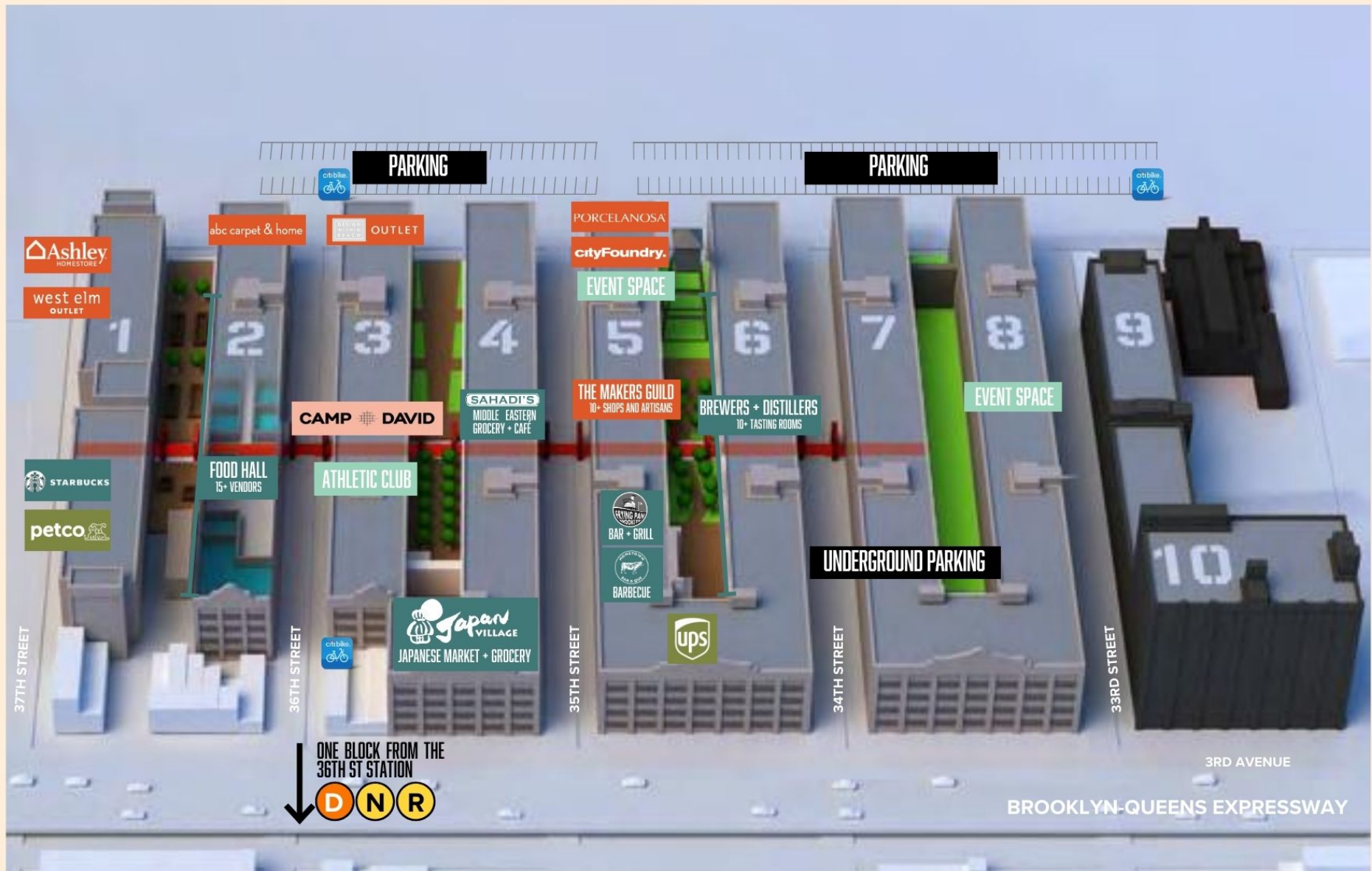
- Display Monitors
- VOIP Conferencing
- Video Conferencing
- HDMI, Apple TV, Chromecast

ON-CAMPUS CATERING AVAILABLE



CAMPUS MAP

Industry City is a 16-building campus spanning 35 acres on the Brooklyn waterfront. To date, the redevelopment has included the addition of destination courtyards, experience-driven dining, design retail and other amenitization and event programming.



INDUSTRY CITY

JOEY POPE, DIRECTOR OF MEMBERSHIP
 e. joey@thecampdavid.com | p. 412.417.6698

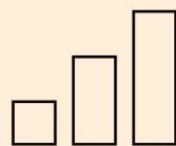
CHLOE MARTIN, LEASING MANAGER
 e. cmartin@industrycity.com | p. 347.417.8415

JHODI DUNKLEY, COMMUNITY MANAGER
 e. jdunkley@industrycity.com | p. 347.232.6587



CAMPUS AMENITIES

*



30+ ISPS AND DARK FIBER CABLING

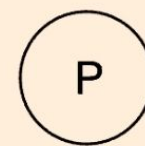


40+ EATERIES + SHOPS

*

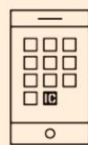


BIKE STORAGE



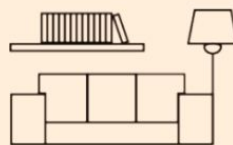
CAR AND TRUCK PARKING AVAILABLE

*



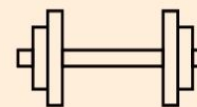
IC APP AND TENANT PERKS

*

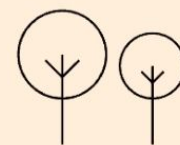


EXECUTIVE LOUNGE AND EVENT VENUES

*



INDUSTRY CITY ATHLETIC CLUB



FIVE ACRES OF OUTDOOR SPACE

* TENANT-EXCLUSIVE

INDUSTRY CITY

JOEY POPE, DIRECTOR OF MEMBERSHIP
e. joey@thecampdavid.com | p. 412.417.6698

CHLOE MARTIN, LEASING MANAGER
e. cmartin@industrycity.com | p. 347.417.8415

JHODI DUNKLEY, COMMUNITY MANAGER
e. jdunkley@industrycity.com | p. 347.232.6587

GETTING TO INDUSTRY CITY

ONE EXPRESS STOP FROM ATLANTIC AVE – BARCLAYS CENTER

	One block from the 36th St Subway Station D N R	
SUBWAY	Fulton Street	2 3 4 5 > D N 15 Min
	Union Square - 14 th St	N 25 Min
	34 th St - Herald Square	D 35 Min
	Grand Central - 42 nd St	4 > N 38 Min
CAR	Directly off of BQE Exit 23; over 1200 parking spots	
	Financial District	10 - 18 Min
	Union Square - 14 th St	18 - 30 Min
BIKE	Adjacent to the Brooklyn Greenway; 5 CitiBike Stations	
	Park Slope	10 Min
	Downtown Brooklyn	20 Min
RIDE SHARE	Average wait time is 4 minutes	

