

# COWORK # IC

## COWORKING LOOKS DIFFERENT HERE

Coworking at Industry City is more than a coworking space; it's an ecosystem where professionals come to grow and businesses flourish. Every aspect of our workspace, from ergonomic furniture to ambient lighting, is crafted with intention, ensuring a comfortable and supportive work environment.

**Our members find value in the ease of networking, sharing ideas, and the opportunities that coalesce in our shared spaces.**





## COWORKING MEMBERS

**Anthom**  
DESIGN HOUSE

**BROOKLYN**  
MAGAZINE

**bse**  
GLOBAL

*edit*  
NEW YORK

**cause\***  
**matter**

**CAVA**

 **CHESS AT THREE**  
EARLY CHILDHOOD CHESS

**IFR & Co.**

**Hianshow**

BROOKLYN, NEW YORK  
**LEX & HUDSON**  
INTERIORS

**the LOVE**  
**LAND**  
foundation

**WR—GHT**

# MEMBER BENEFITS

Industry City's coworking space provides more than just a furnished workspace; its specialized breakout areas are designed specifically for creative endeavors. Its members are part of a tight-knit community that enjoys all the advantages the broader campus offers.



**LIBRARY LOUNGES**  
SOFT SEATING FOR WORK + BREAKS



**CONTENT STUDIO**  
SOUNDPROOF + PRIVATE



**ON-SITE COMMUNITY  
MANAGER**



**SPACE FOR  
HOSTING EVENTS**



**GROUND FLOOR LOUNGE WITH  
COFFEE SERVICE**



**MAKERSPACE WITH  
MATERIALS & TOOLS**

# MEMBERSHIP TYPES

	<b>COMMUNITY MEMBERSHIP</b>	<b>ASSIGNED DESKS</b>	<b>PRIVATE OFFICES</b>
<b>SIZE</b>	Individuals	Individuals	1 to 6-Person Offices
<b>PRICING STARTING AT</b>	\$300 / month	\$600 / month	\$1,500 / month
<b>ACCESS TO THE GROUND FLOOR WORK LOUNGE</b>	X	X	X
<b>BOOKABLE CONFERENCE ROOMS</b>	X	X	X
<b>FREE COFFEE SERVICE &amp; WIFI</b>	X	X	X
<b>ON-SITE COMMUNITY MANAGER</b>	X	X	X
<b>OVERSIZED DESK WITH CHAIR</b>		X	X
<b>FURNISHED, SOUNDPROOF OFFICE WITH SMART LOCK</b>			X
<b>COMMON AREA PANTRY</b>	X	X	X
<b>MAKERSPACE &amp; PHOTO STUDIO</b>	X	X	X
<b>MAIL SERVICES</b>		X	X
<b>MULTI-FUNCTION PRINTER &amp; COPIER</b>		X	X
<b>EVENTS &amp; PROGRAMMING</b>	X	X	X



## THE LANDING

The Landing includes a warm entryway and check-in desk, modular soft seating, movable library tables, a fully equipped cafe and bar area, and two adjacent boardrooms available for separate bookings. Lined with glass doors, the space opens to a large courtyard.

The Landing is an optimal space for conferences, panels, workshops, and company off-sites.

### AREA

- 7,500 SQ. FT

### CAPACITY

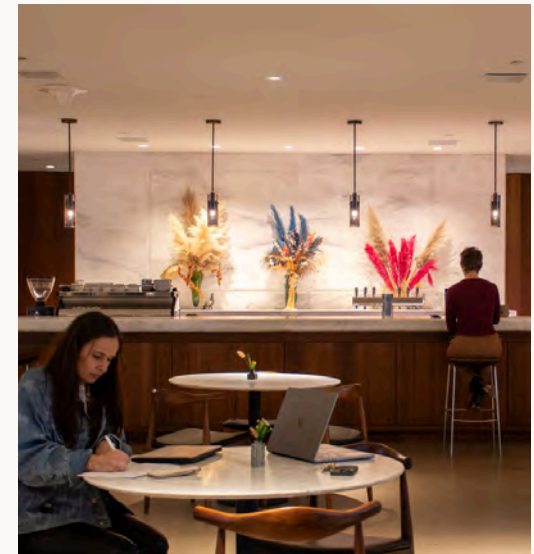
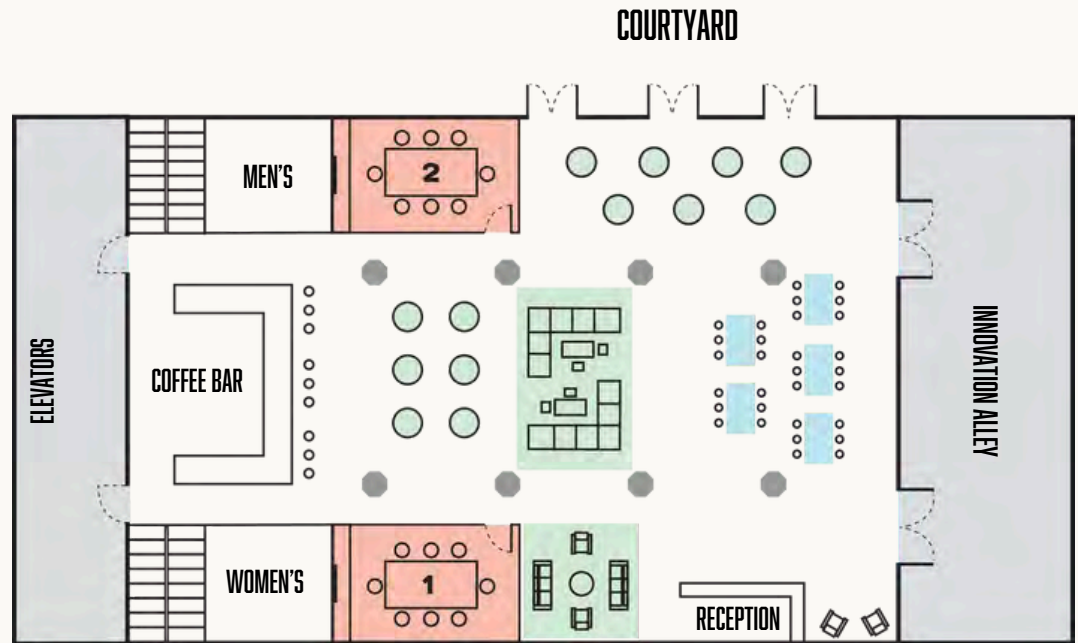
- 250 Standing
- 150 Seated

### AMENITIES

- Full Wet Bar with Under-Counter Refrigerators
- Courtyard Access
- Loading Dock
- Dimmable Lighting
- Ample Natural Sunlight

### AV & TECHNOLOGY

- Surround Sound Speaker System
- TV & Projection Display Options
- Wireless & Handheld Microphones
- PA Speaker System Available



# MAKERSPACE

The Makerspace is located on the lower level and houses a professional suite for product photography, a workshop and tool wall, and textile studio with industrial sewing machines. Primed for hosting panels, screenings, and hands-on workshops, the Makerspace is accessible from the Ground Floor. An adjacent large boardroom and lounge are also available for separate bookings.

## AREA

- 6,000 SQ. FT

## CAPACITY

- 120 Standing
- 120 Seated

## AMENITIES

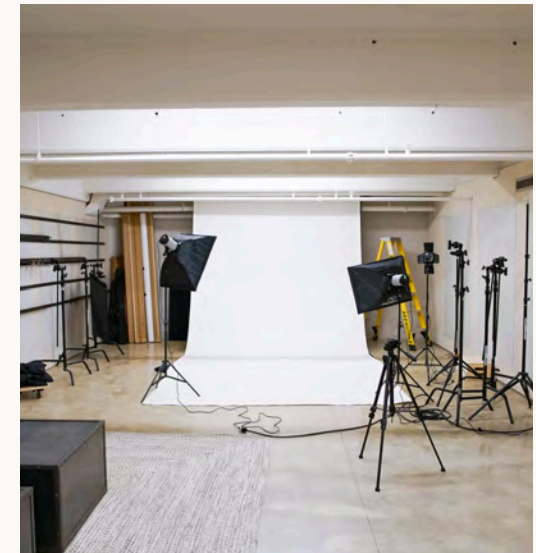
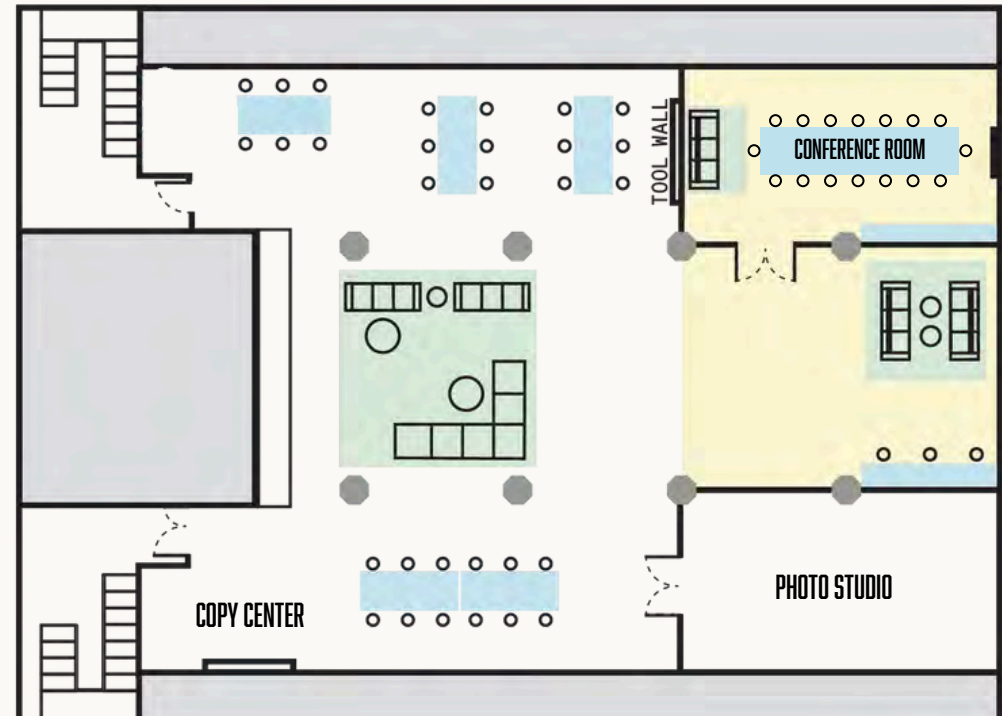
- Seating Rental
- Dimmable Lighting
- Work Desks
- Lounge Seating

## ADDITIONAL RENTABLE SPACE

- Meeting Room (1)

## AV & TECHNOLOGY (INCLUDED)

- Surround Sound Speaker System
- TV & Projection Display Options
- Wireless & Handheld Microphones
- PA Speaker System Available
- Printing Station



# BOARDROOMS

The Boardrooms are located on the full-service Ground Floor. Light-filled and well-appointed with presentation and conferencing capabilities, the boardrooms are private and ideal for meetings, workshops, off-sites, and lunches.

For groups exceeding 10 people, a larger boardroom is available in the lower level Makerspace.

## AREA

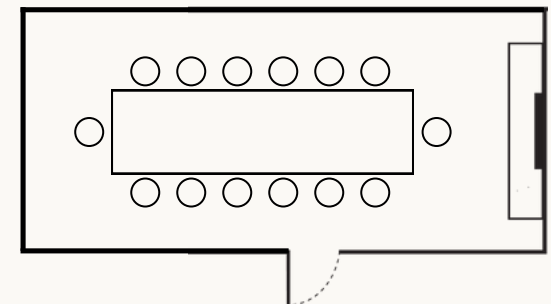
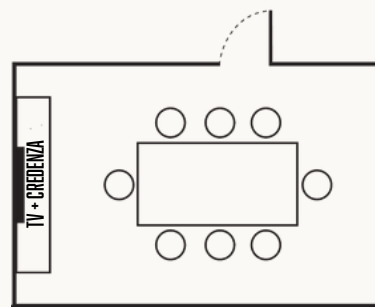
- 250 SQ. FT

## CAPACITY

- Seats up to 14

## AV & TECHNOLOGY (INCLUDED)

- Display Monitors
- VOIP Conferencing
- Video Conferencing
- HDMI, Apple TV, Chromecast



# CAMPUS MAP

Industry City is a 16-building campus spanning 35 acres on the Brooklyn waterfront. To date, the redevelopment has included the addition of destination courtyards, experience-driven dining, design retail and other amenitization and event programming.





# AMENITIES

At Industry City, workspace is more than just four walls and a roof. We offer a dynamic community-focused environment, complemented by a range of amenities that are thoughtfully designed to elevate your workday.



## IC ATHLETIC CLUB

Full-service gym with personal training, free wellness classes, locker rooms, and showers.



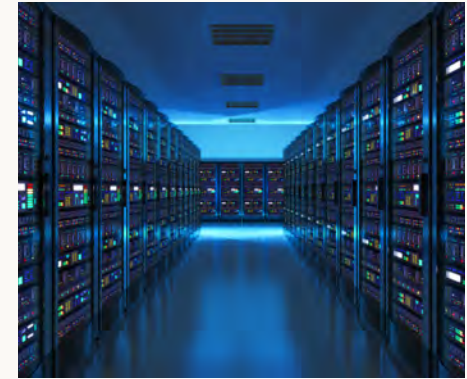
## COURTYARDS + OUTDOOR SPACE

Three furnished, heated courtyards with distinctive personalities.



## EXECUTIVE LOUNGE + CONFERENCING

Exclusive lounge for business owners, access to conference rooms, and private event venues.



## 35 ISPS AND DARK FIBER CABLING

Access to 35+ carriers, network operators, ISPs, and major cloud providers.



## EATERIES AND BARS

Over 50 restaurants, bars, breweries, distilleries, and grocery stores.



## BIKE STORAGE AND CITIBIKE DOCKS

Secure indoor bike room and four CitiBike docks along the perimeter of the campus.



## CAR AND TRUCK PARKING

Monthly parking available with Electric Vehicle charging stations.



## IC APP AND TENANT DISCOUNTS

Digital resource to access tenant exclusive discounts, collaboration opportunities + events.

# GETTING TO INDUSTRY CITY

## ONE EXPRESS STOP FROM ATLANTIC AVE – BARCLAYS CENTER

One block from the 36th St Subway Station **D N R**

### SUBWAY

Fulton Street	<b>2 3 4 5 &gt; D N</b>	15 Min
Union Square - 14 <sup>th</sup> St	<b>N</b>	25 Min
34 <sup>th</sup> St - Herald Square	<b>D</b>	35 Min
Grand Central - 42 <sup>nd</sup> St	<b>4 &gt; N</b>	38 Min

### CAR

Directly off of BQE Exit 23; over 1200 parking spots

Financial District	10 - 18 Min
Union Square - 14 <sup>th</sup> St	18 - 30 Min

### BIKE

Adjacent to the Brooklyn Greenway; 5 CitiBike Stations

Park Slope	10 Min
Downtown Brooklyn	20 Min

### RIDE SHARE

Average wait time is 4 minutes

