



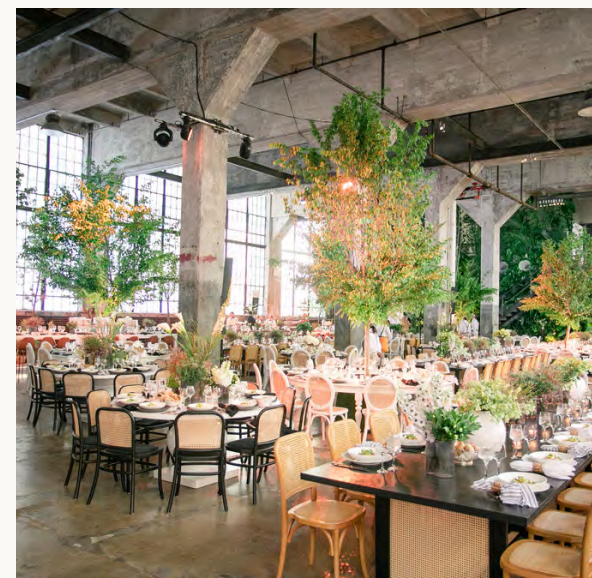
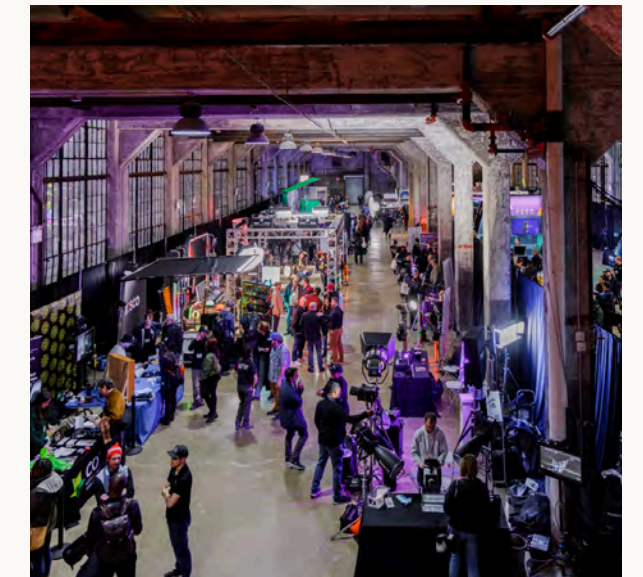
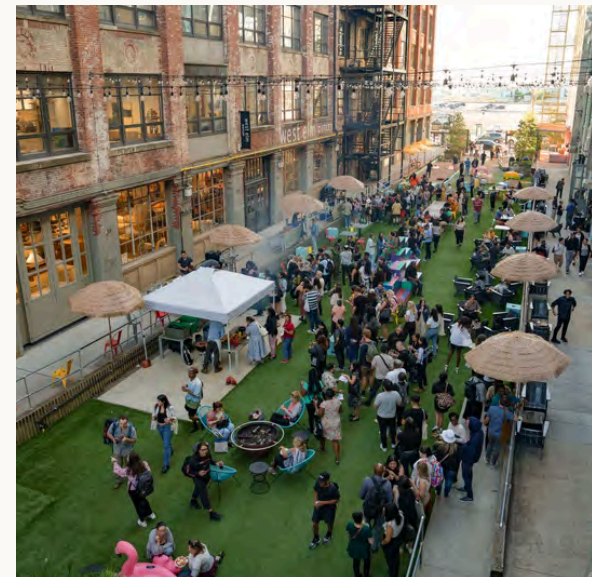
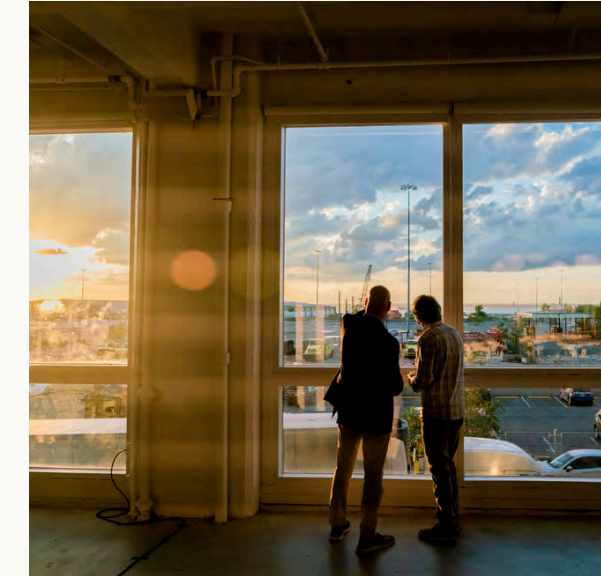
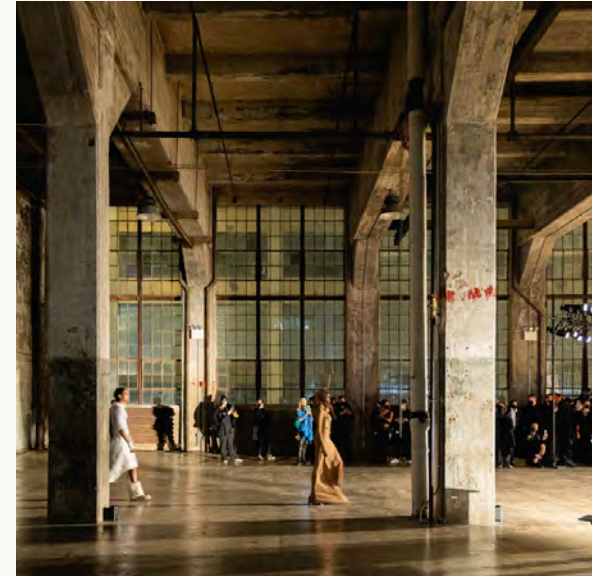
INDUSTRY CITY

AN URBAN CAMPUS

From cocktail parties to gala dinners, to corporate conferences to trade shows, IC is the ideal location to host your next event.

Past programming includes:

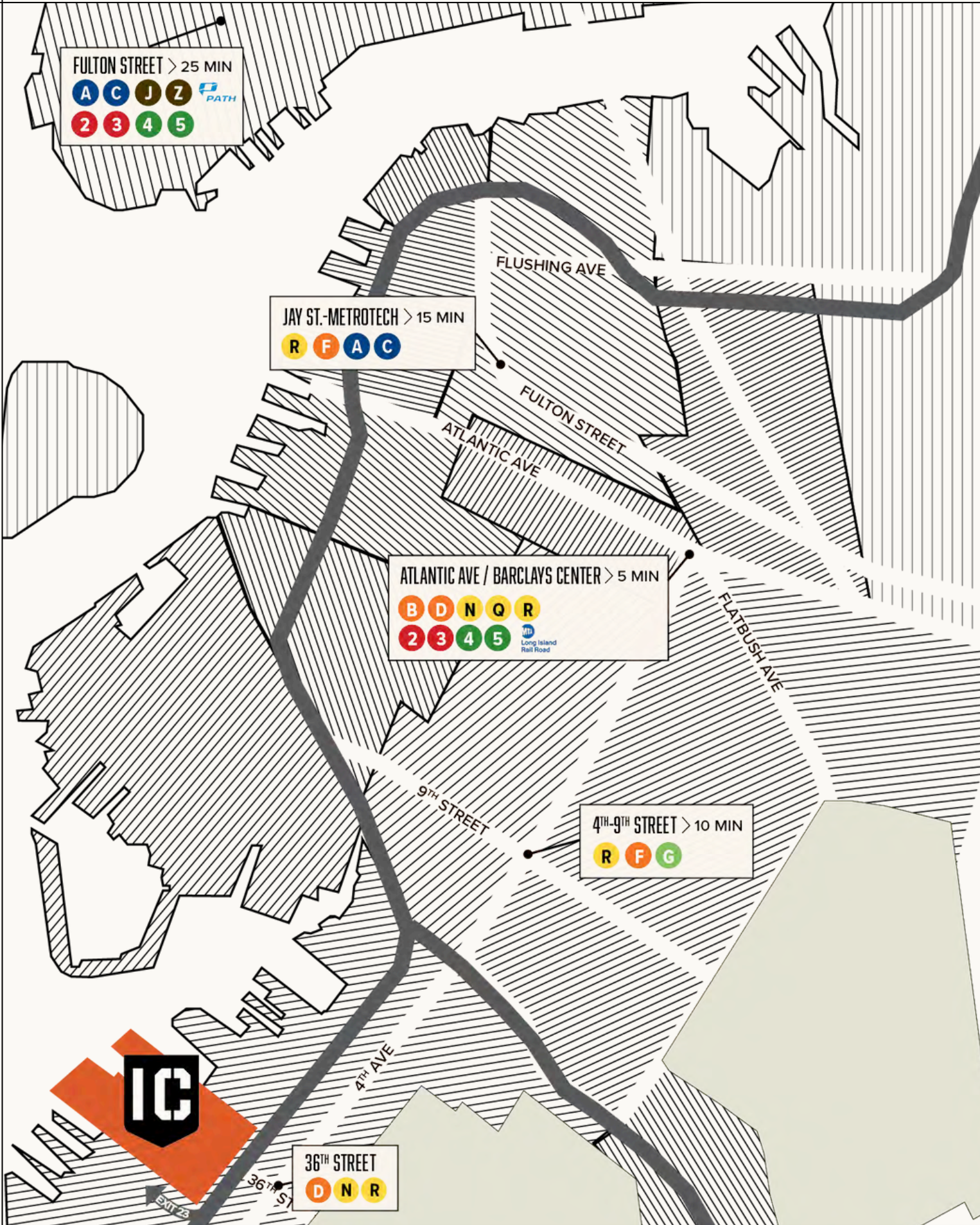
- Weddings
- Bar/Bat Mitzvahs
- Corporate Conferences
- Company Retreats
- Holiday Parties
- Tradeshow + Expos
- Film Screenings
- Concerts + Live Music
- Festivals
- Markets + Sample Sales
- Brand Activations + Pop-ups
- Film + TV Productions

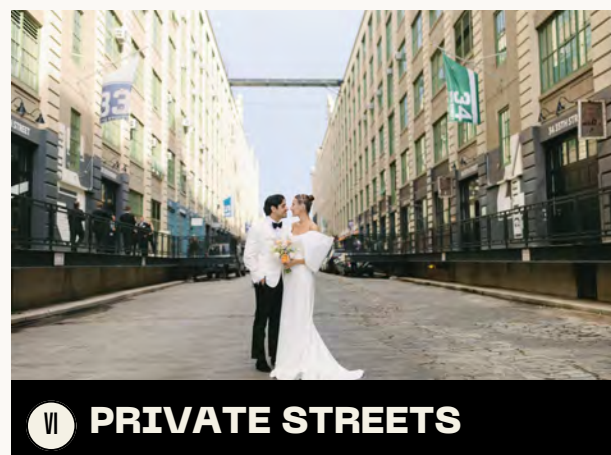
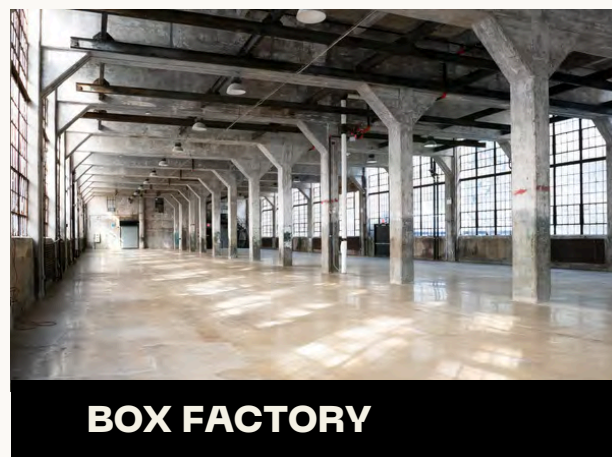


ONE EXPRESS STOP FROM ATLANTIC AVE–BARCLAYS CTR
2 STOPS FROM MANHATTAN

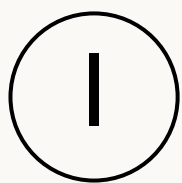
SUBWAY	One block from the 36th St Subway Station DNR		
	Fulton Street	2 3 4 5 > D N	15 Min
	Union Square - 14 th St	N	25 Min
	34 th St - Herald Square	D	35 Min
	Grand Central - 42 nd St	4 > N	38 Min
CAR	Directly off of BQE Exit 23; over 1200 parking spots		
	Financial District		10 - 18 Min
	Union Square - 14 th St		18 - 30 Min
BIKE	Adjacent to the Brooklyn Greenway; 5 CitiBike Stations		
	Park Slope		10 Min
	Downtown Brooklyn		20 Min
RIDE SHARE	Average wait time is 4 minutes		

PARKING IS AVAILABLE IN A SECURE LOT ON 37TH STREET AND 2ND AVENUE FOR:
\$15 / WEEKDAY
\$5 / WEEKNIGHT [AFTER 5PM]
\$5 / WEEKEND DAY
VALET IS AVAILABLE FOR AN ADDITIONAL FEE





Not seeing what you're looking for?
Email ic-events@industrycity.com to learn about other availabilities.



FIVE-TWO-A



CLICK TO RETURN TO
THE CAMPUS MAP

Polished industrial event space with wrap-around floor-to-ceiling windows overlooking the water with views of the Statue of Liberty + Manhattan skyline.

SPACE SIZE

11,183 SF

CAPACITY

600 Standing // 400 Seated

FEATURES

Wrap-around floor-to-ceiling windows

External stair and balcony connecting to Courtyard 5/6

Dedicated private suite complete with bathroom and dressing room

Built-in drape track, allowing the room to be divided into two separate sections

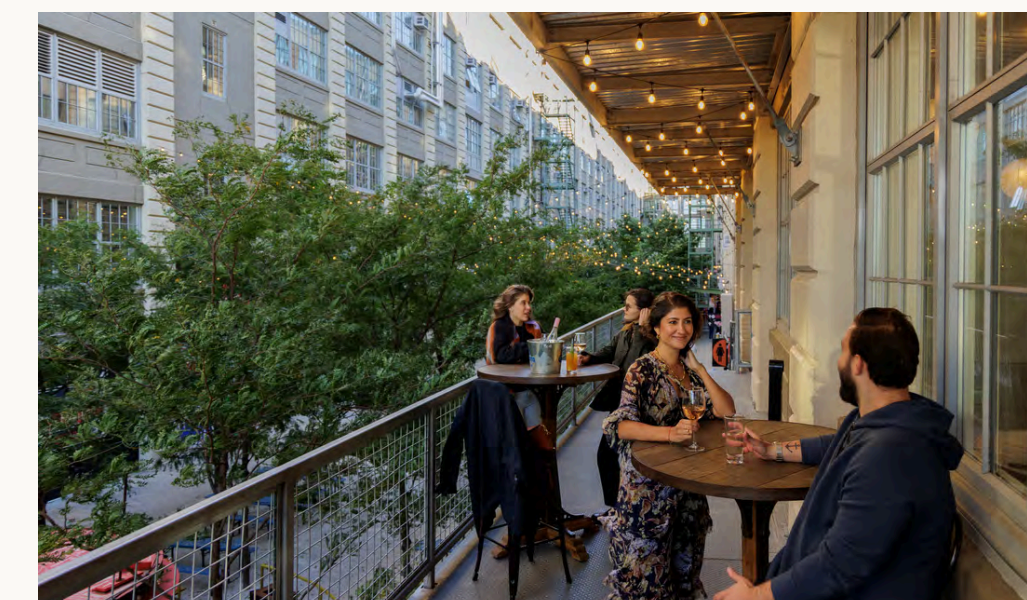
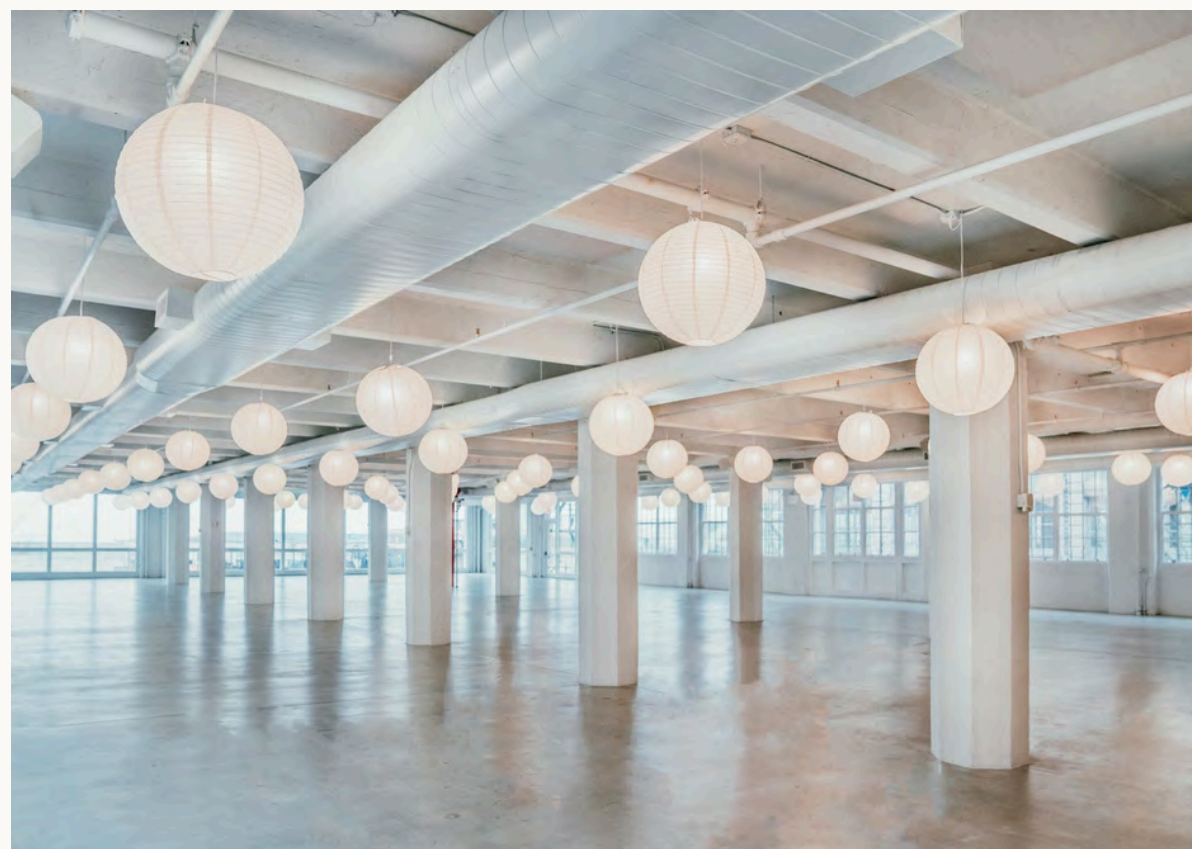
Dimmable house lighting

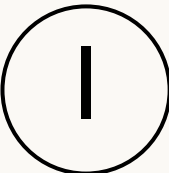
Dedicated WiFi and hardline jacks throughout

Back-of-house space with power + water

Furniture available for rent

Proximity to IC parking lot





FIVE-TWO-A

CLICK TO RETURN TO THE CAMPUS MAP

SPACE SIZE

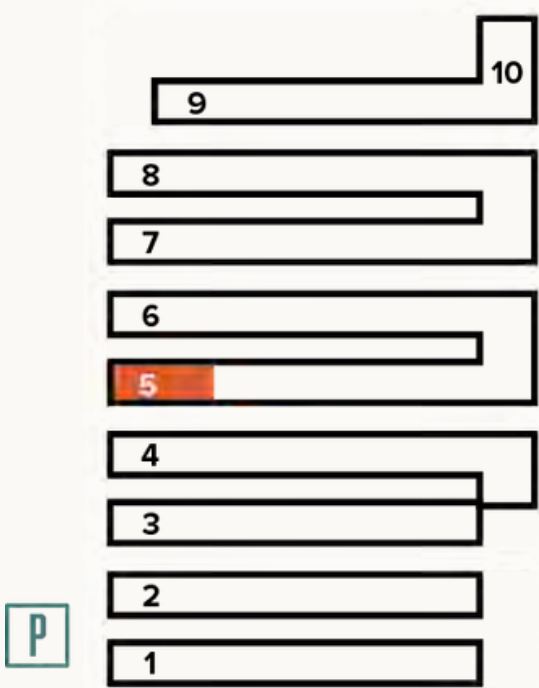
EVENT SPACE: 11,183 SF
SUITE: 214 SF
BACK OF HOUSE: 626 SF
BACK OF HOUSE STORAGE: 258 SF
LOBBY: 531 SF

CEILING HEIGHTS

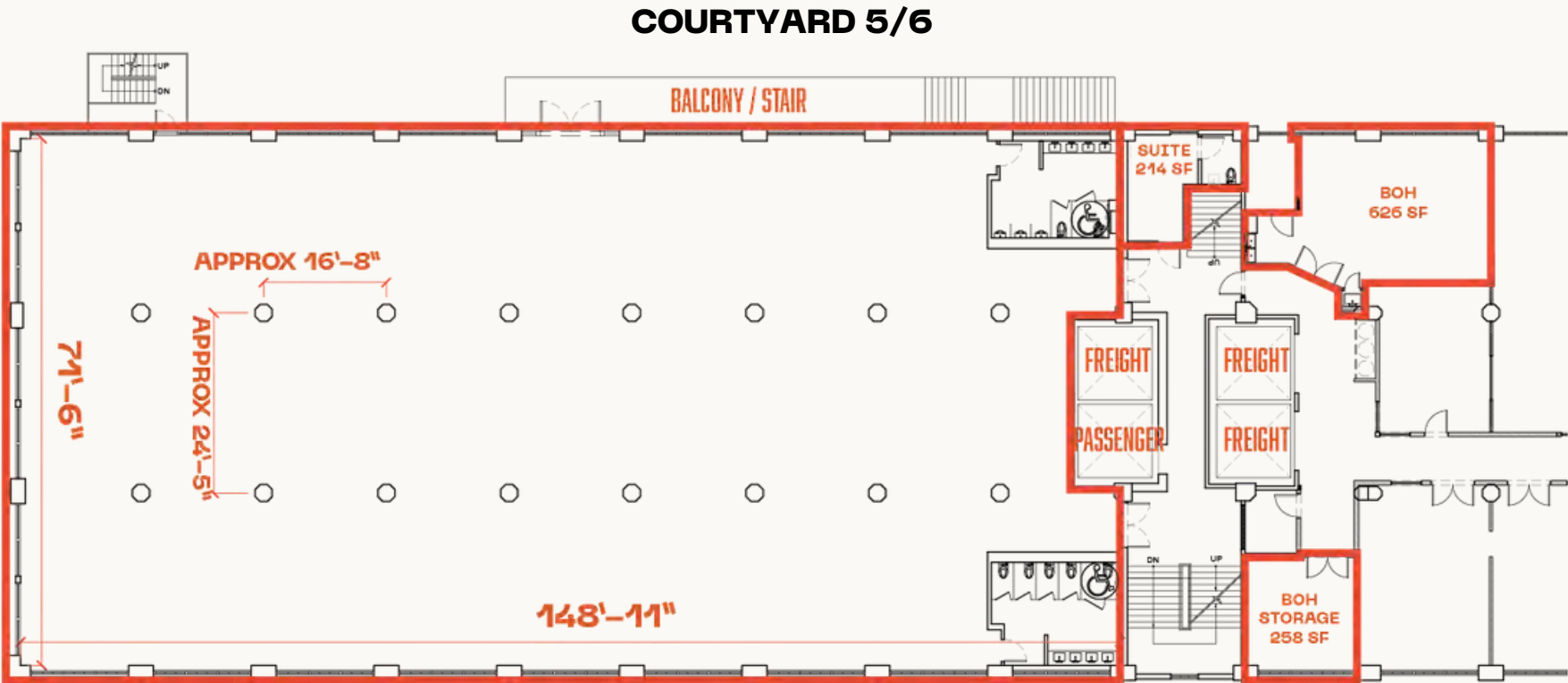
UNDERSIDE OF SLAB: 12'-8"
UNDERSIDE OF BEAM: 11'-6"
UNDERSIDE OF GIRDER: 11'-2"

MEASUREMENTS

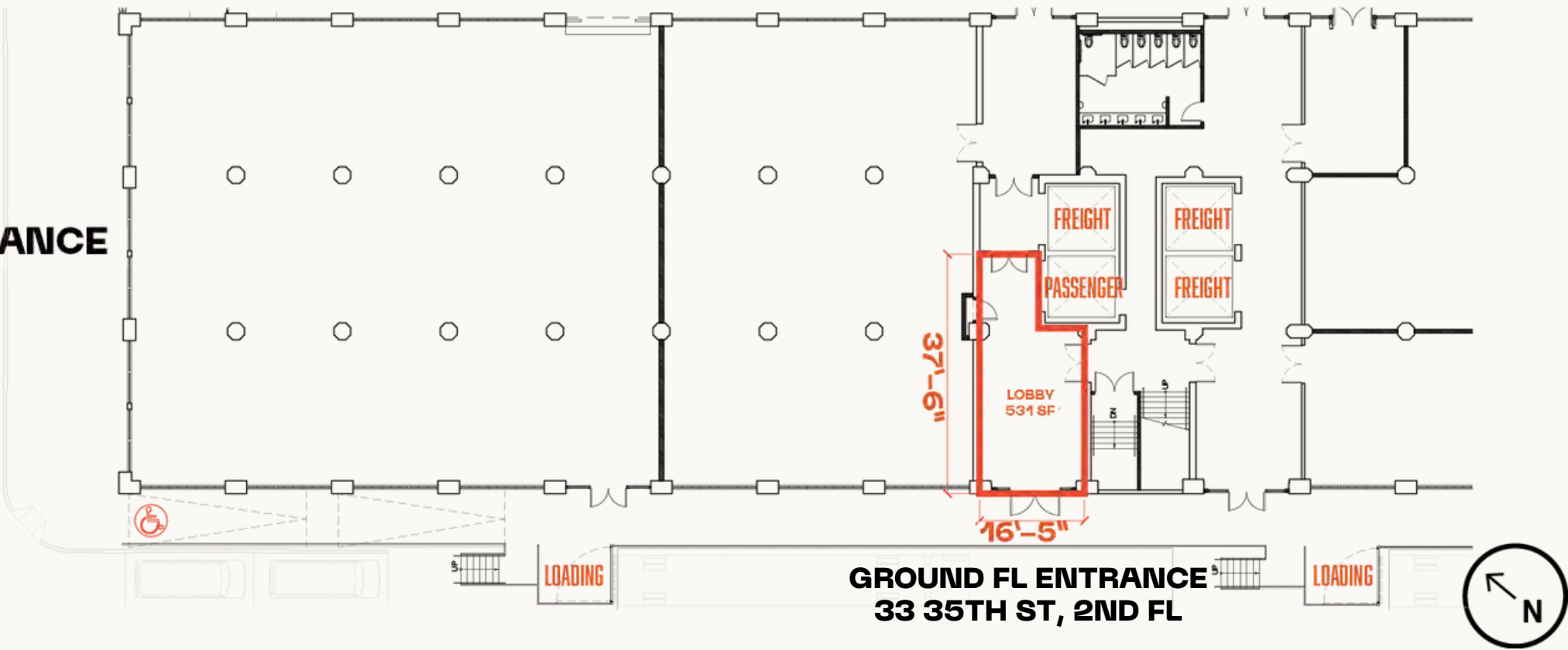
COLUMN SPACING: 24'-5" NS; 16'-8" EW
LENGTH: 148'-11" WIDTH: 71'-6"

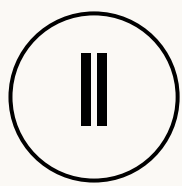


FIVE-TWO-A
[2ND FL]



GROUND / ENTRANCE





THE LANDING GROUND FLOOR



CLICK TO RETURN TO
THE CAMPUS MAP

The Landing's interior demonstrates practicality, functionality and sophistication across two floors, the ground level and the basement makerspace. It lends itself to various event and meeting needs.

SPACE SIZE

Ground Floor: 7,469 SF

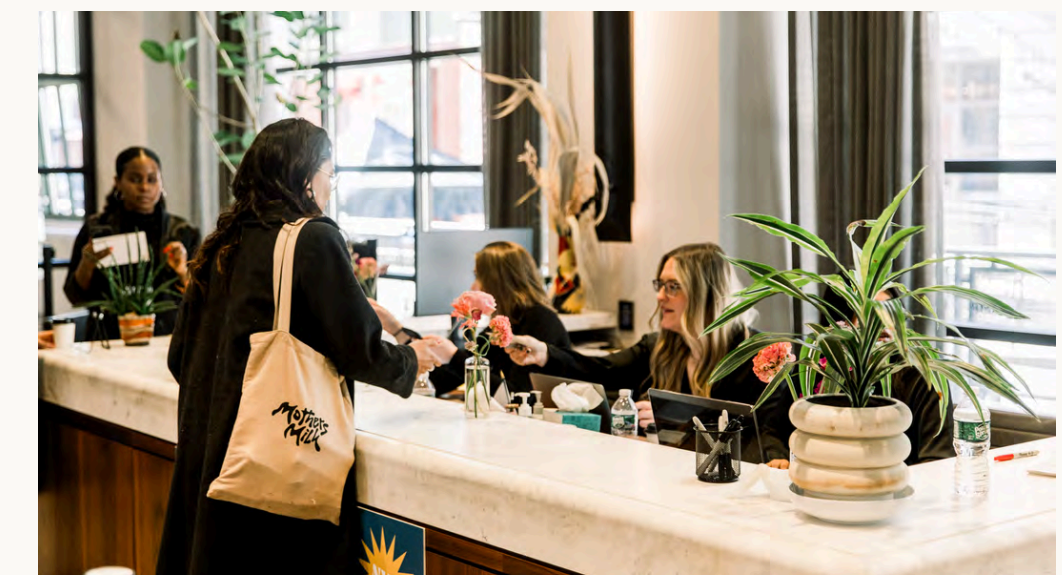
Lower Level: 7,581 SF

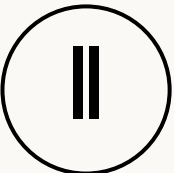
CAPACITY

250 Standing // 150 Seated

FEATURES

- Dimmable house lighting
- Dedicated WiFi available throughout
- Complimentary bar + lounge furniture
- Back-of-house space with power + water
- Catering kitchen with equipment (Lower Level)
- Floor-to-ceiling windows
- Access to Courtyard 3/4
- Men's and women's restrooms on the ground floor
- Breakout spaces available
- 100 black conference chairs available
- Proximity to the IC parking lot





THE LANDING GROUND FLOOR

 [CLICK TO RETURN TO THE CAMPUS MAP](#)

SPACE SIZE

GROUND FLOOR: 7,469 SF

LOWER LEVEL: 7,581 SF

GROUND FLOOR CEILING HEIGHTS

UNDERSIDE OF SLAB: 12'-8"

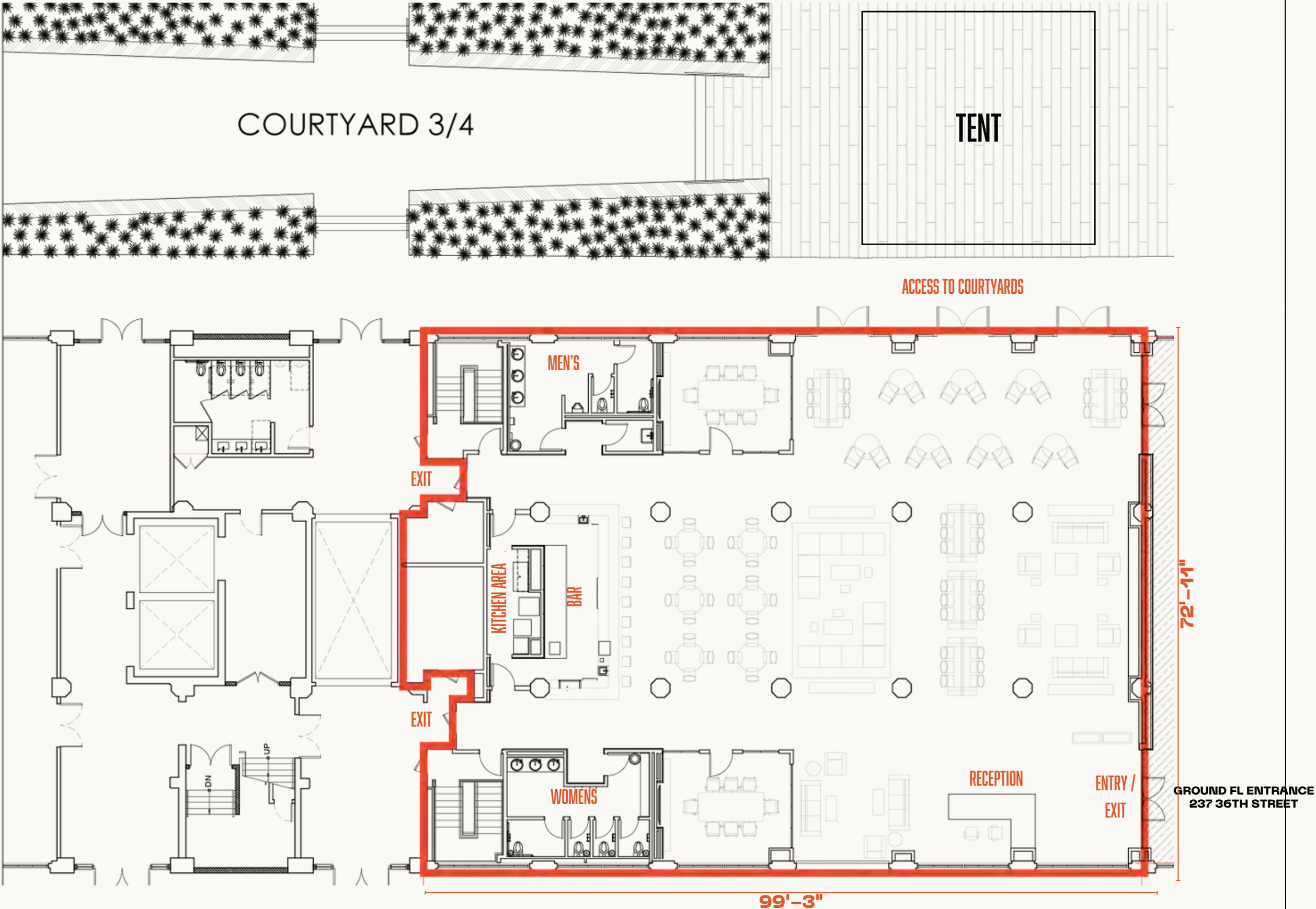
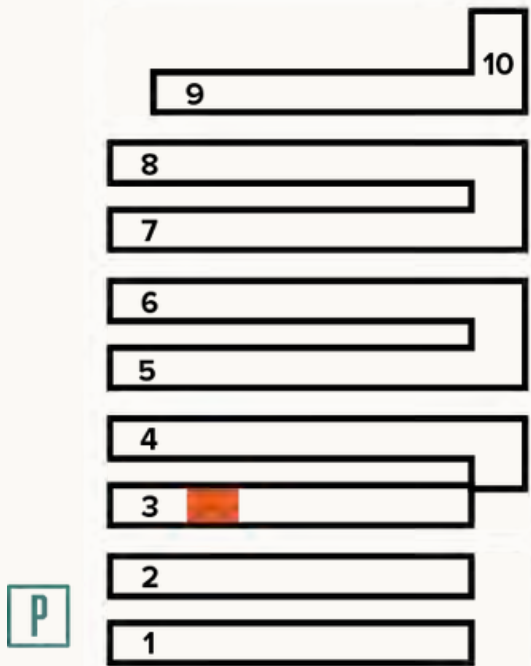
UNDERSIDE OF BEAM: 11'-6"

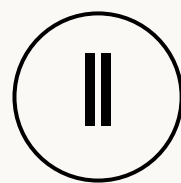
UNDERSIDE OF GIRDER: 11'-2"

MEASUREMENTS

COLUMN SPACING: 24'-4" NS; 16'-8" EW

LENGTH: 99'-3" WIDTH: 72'-11"





THE LANDING LOWER LEVEL



CLICK TO RETURN TO
THE CAMPUS MAP

The Landing's Lower Level is ideal for company off-sites, workshops, or corporate gatherings. The flexible floorplan allows for a large presentation and a 20 - 30 person breakout meeting to occur simultaneously.

CAPACITY

150 Standing // 100 Seated

SPACE SIZE

Lower Level: 7,581 SF

LOWER LEVEL CEILING HEIGHTS

Underside of Slab: 9'-6"

Underside of Beam: 8'-0"

Underside of Girder: 7'-8"

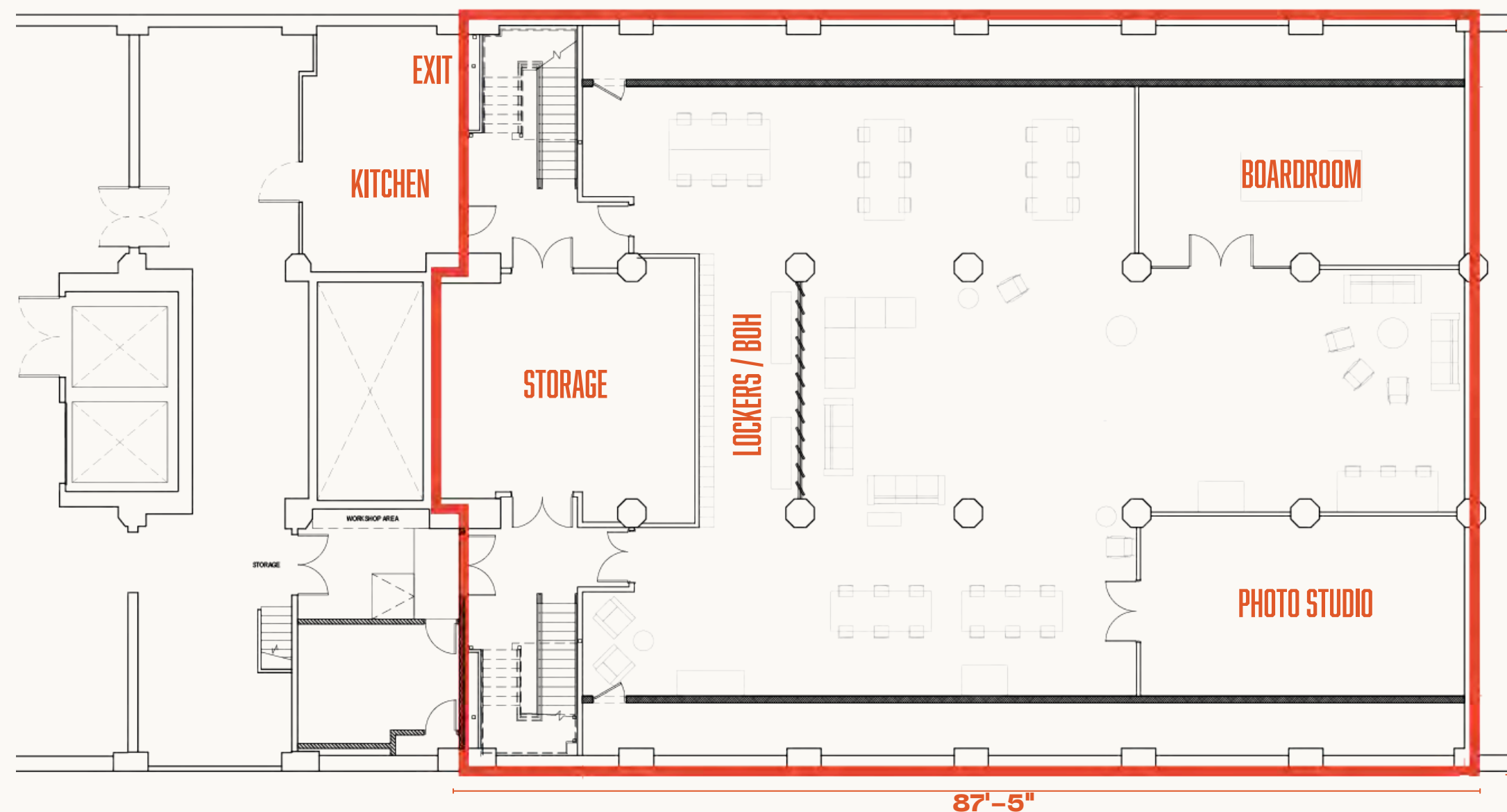
MEASUREMENTS

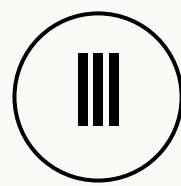
Column Spacing: 24'-4" NS; 16'-8" EW

Length: 87'-5" Width: 60'-5"

FEATURES

Complimentary lounge furniture
Dedicated WiFi available throughout
100 black conference chairs available
Elevator access
Proximity to the IC parking lot





THE BOX FACTORY

 [CLICK TO RETURN TO THE CAMPUS MAP](#)

Large-format, raw industrial space with high ceilings and oversized windows.

SPACE SIZE

Ground Floor: 18,810 SF **Courtyard:** 33,310 SF

CAPACITY

1200 Standing; additional ancillary space available

CEILING HEIGHTS

Underside of Slab: 27'-0"

Underside of Beam: 25'-8"

Underside of Girder: 20'-10"

CEILING HEIGHTS

Column Spacing: 34'-10" NS; 14'-5" EW

Length: 249'-1" **Width:** 71'-4"

FEATURES

Dedicated entrance

23 restrooms including 3 ADA accessible and 2 ambulatory stalls

Back-of-house / catering space with sink

Dedicated WiFi available throughout

Drive-in loading dock

Ductwork available for HVAC connection

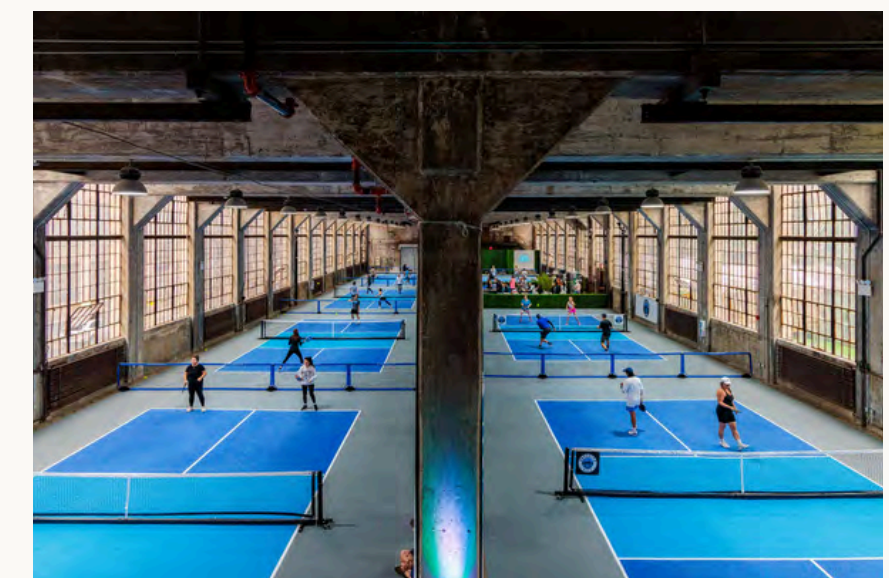
Rigging points

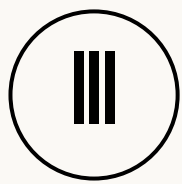
Additional ancillary spaces available to add-on

Access to Courtyard 7/8

String lights in Courtyard 7/8

Proximity to IC parking lot





THE BOX FACTORY

 [CLICK TO RETURN TO THE CAMPUS MAP](#)

SPACE SIZE

Ground Floor: 18,810 SF

Courtyard: 33,310 SF

CAPACITY

1200 Standing

Additional ancillary space available

CEILING HEIGHTS

Underside of Slab: 27'-0"

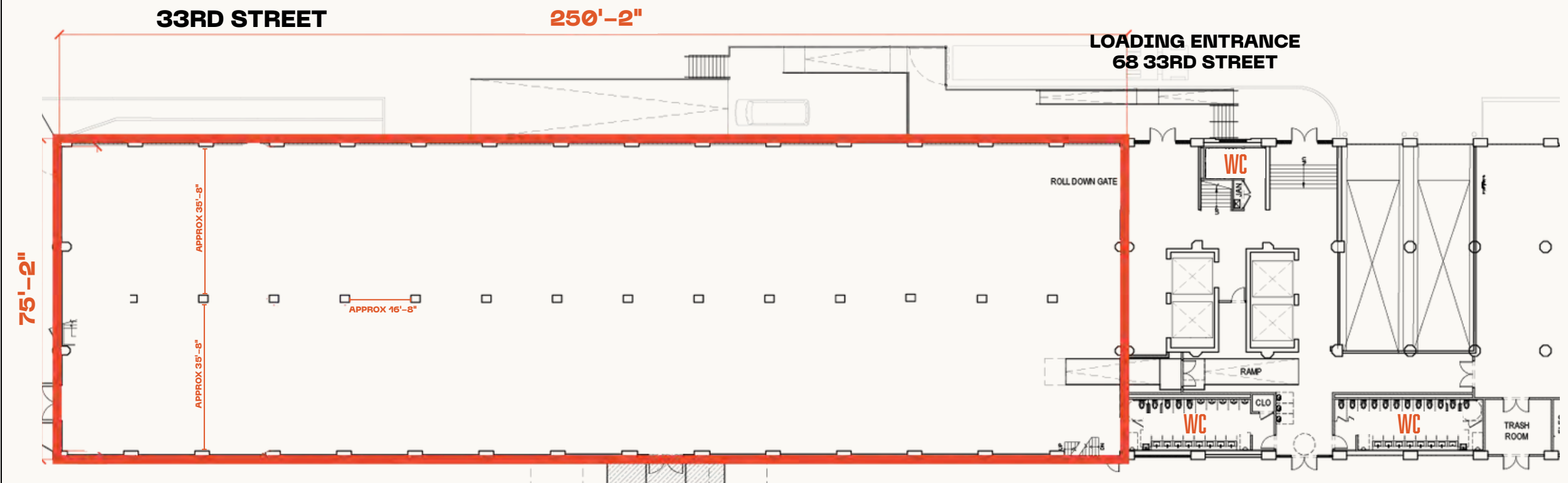
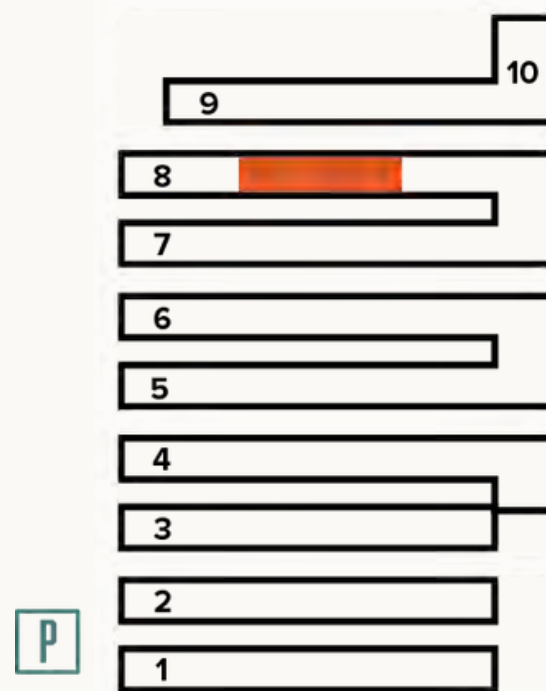
Underside of Beam: 25'-8"

Underside of Girder: 20'-10"

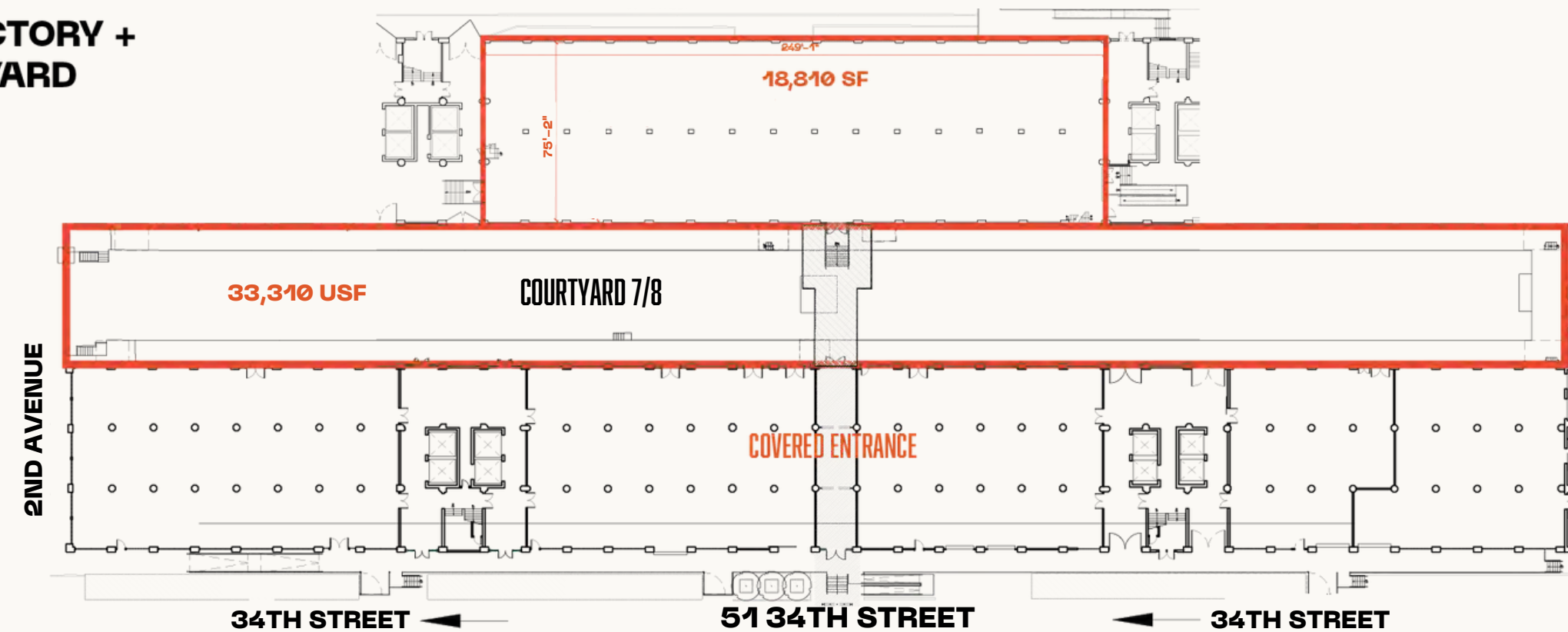
CEILING HEIGHTS

Column Spacing: 34'-10" NS; 14'-5" EW

Length: 249'-1" Width: 71'-4"



BOX FACTORY + COURTYARD



Home to the Bandshell, outdoor stage and adjacent to the Food Hall in BLDG 2.

CAPACITY

1200 Standing

SPACE SIZE

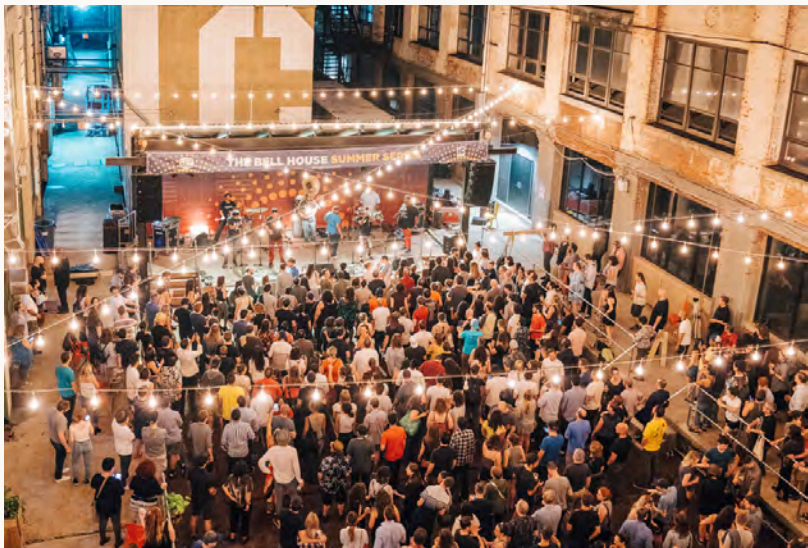
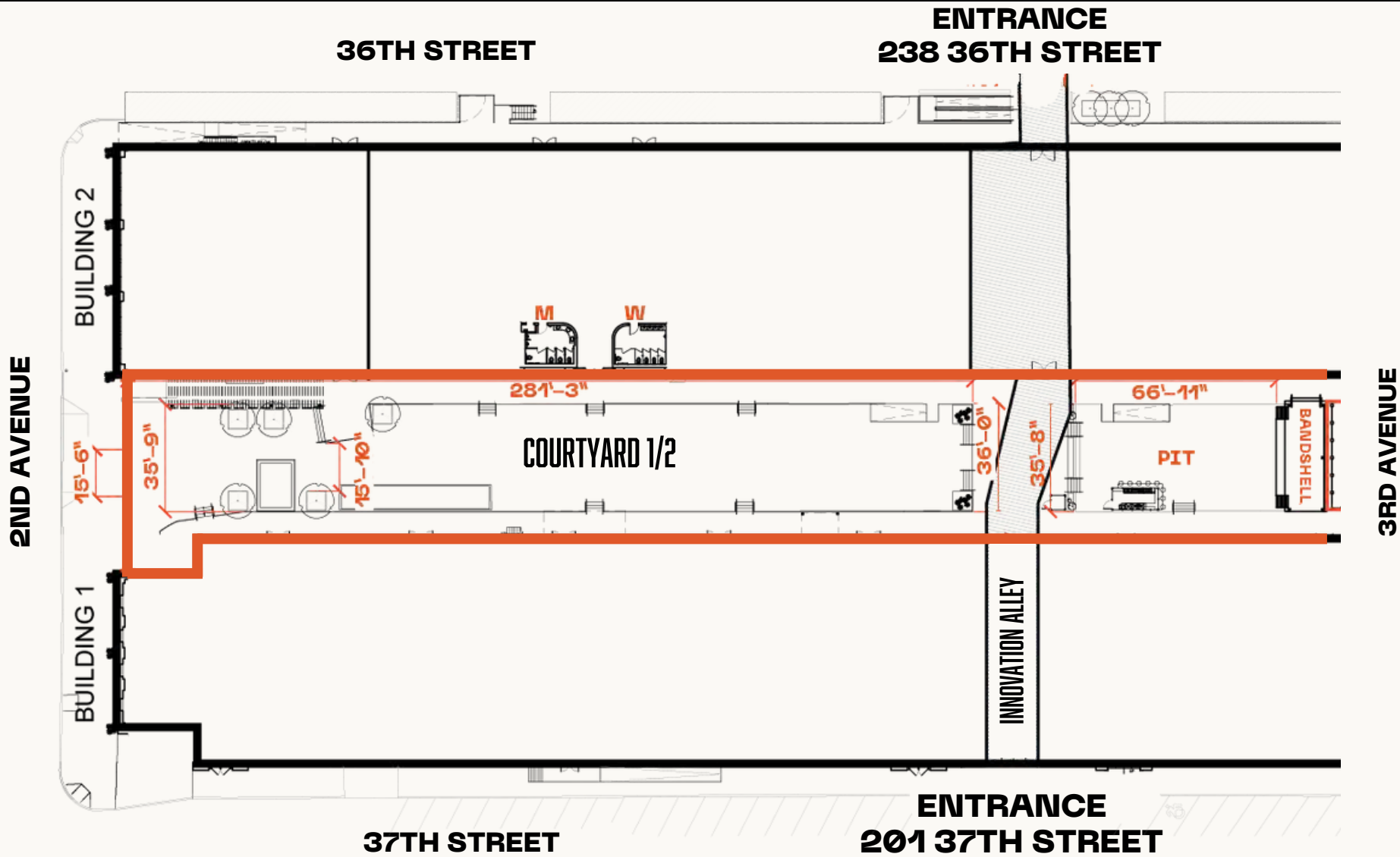
24,641 SF Full Courtyard
2,214 SF Pit Area

MEASUREMENTS

Length: 281'-3"
Width: 36'-0" TYP

FEATURES

- Bandshell stage area
- Professional sound equipment available for rent
- Courtyard overhead string lights
- Access to indoor restrooms
- Food truck parking accessible
- Proximity to the IC parking lot



Adjacent to The Landing, Courtyard 3/4 lends itself to ceremony or cocktail events. Additionally, near Innovation Alley, the landscaped zones are well-trafficked and ideal for brand experiences and pop-ups.

SPACE SIZE

12,610 SF West Side

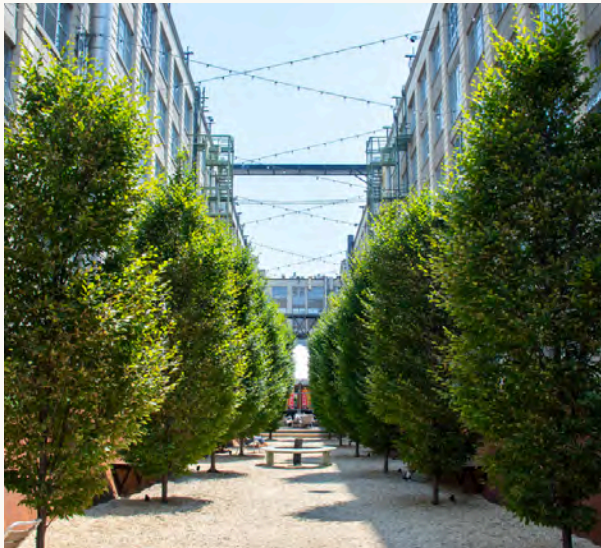
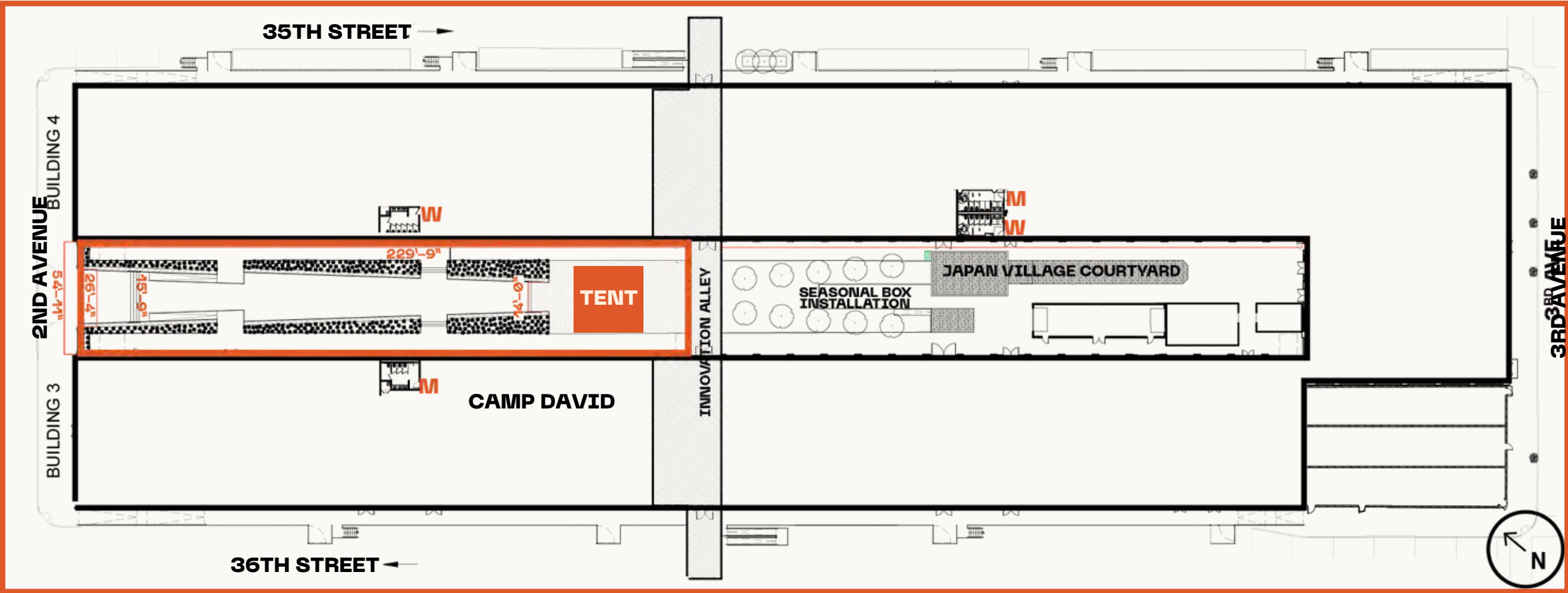
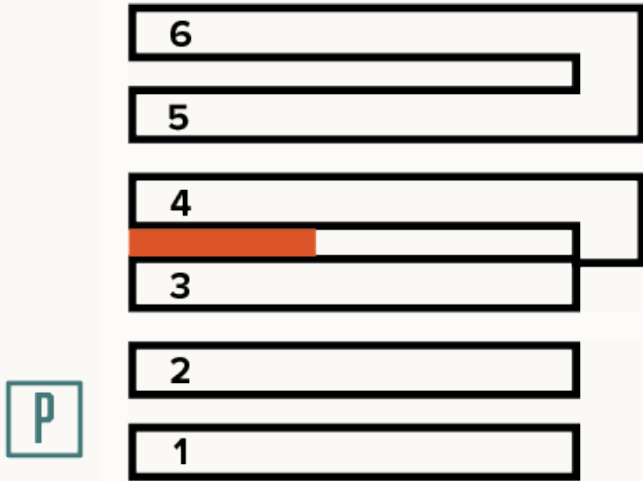
MEASUREMENTS

Length: 229'-9"

Width: 14'-0" - 26'-4"

FEATURES

- Overhead string lights
- Adjoining The Landing
- Tented area available
- Access to 2nd Avenue
- Adjacent bathrooms
- Proximity to IC parking lot





COURTYARD 5/6
WEST SIDE

CLICK TO RETURN TO
THE CAMPUS MAP

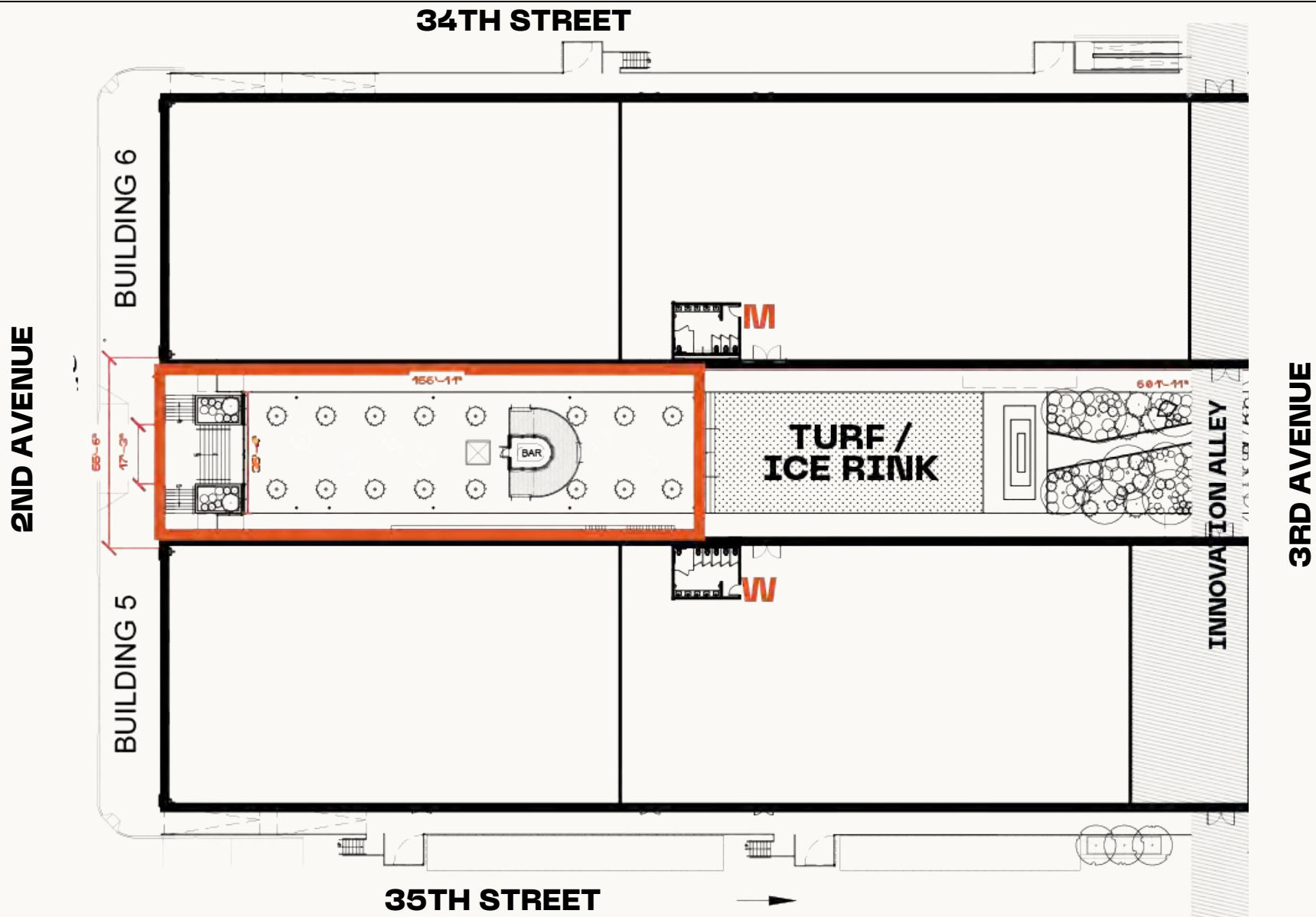
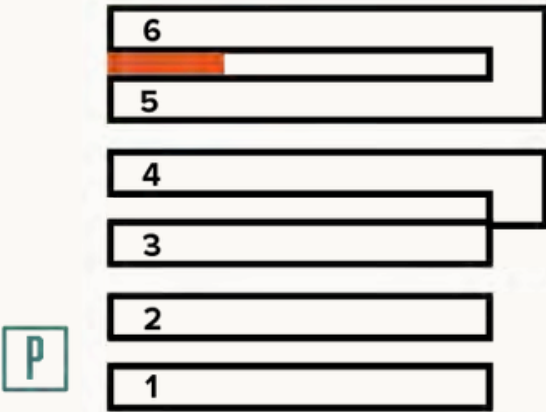
Adjacent to IC’s collection of breweries + distilleries as well as the Five-Two-A event space, the west side of Courtyard 5/6 is ideal for outdoor cocktail hour or overflow.

SPACE SIZE
8,707 SF West Side

CAPACITY
300 Standing

MEASUREMENTS
Length: 156’-11” Width: 36’-4”

- FEATURES**
- Outdoor staircase connecting to Five-Two-A event space
 - Satellite ‘wheelhouse’ bar
 - Café seating available
 - Ancillary picnic table seating
 - Overhead string lights



Former US Post Office converted into a whiteboxed gallery ideal for exhibitions and pop-ups.

SPACE SIZE

13,974 SF

CEILING HEIGHTS

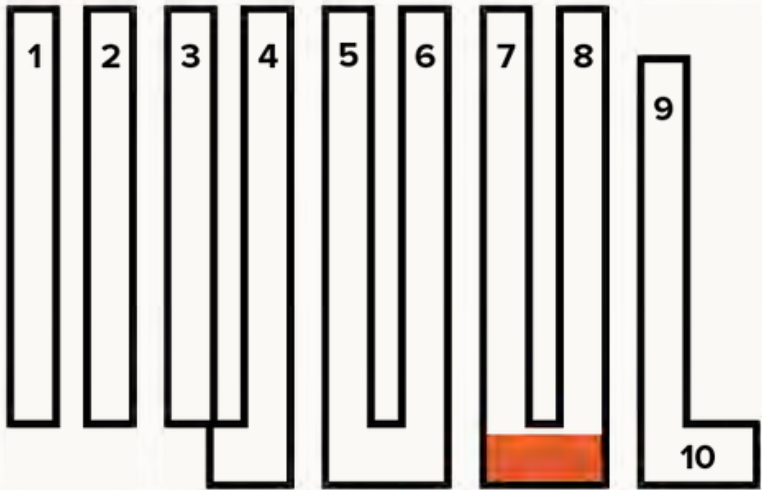
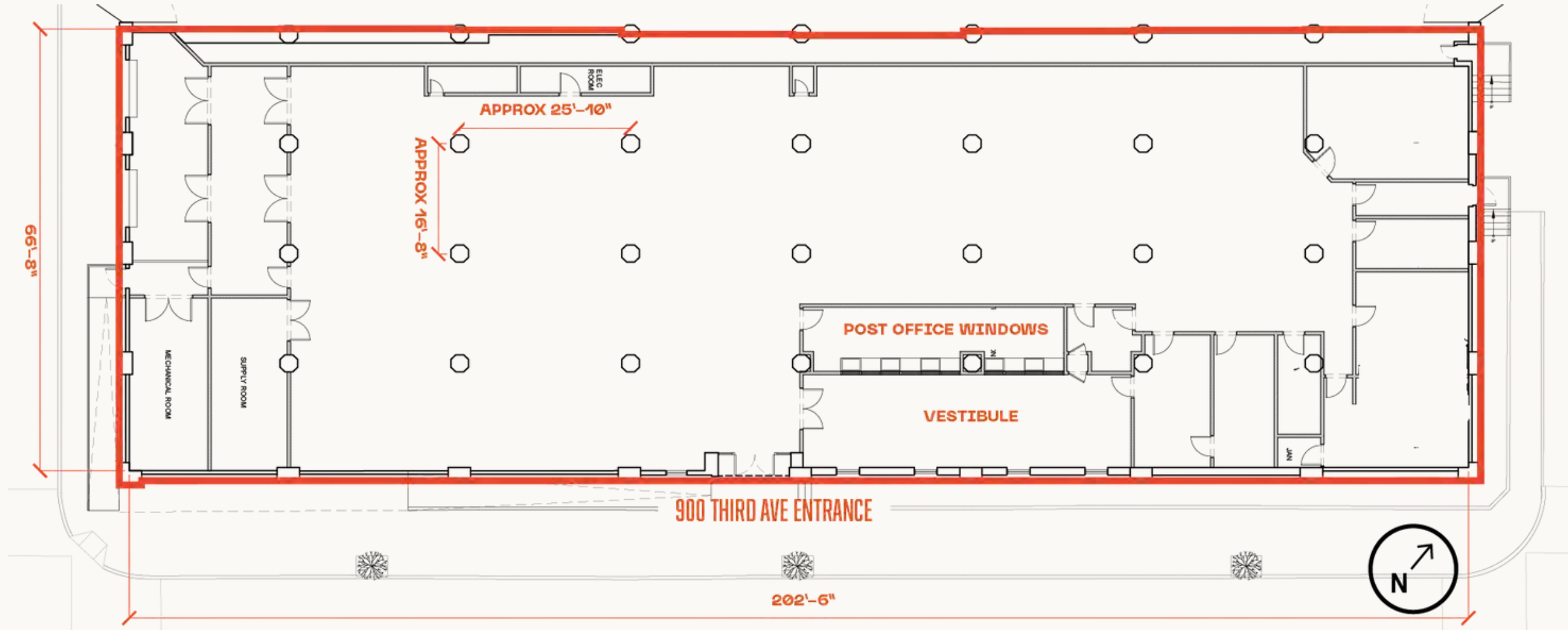
- Underside of Slab: 14'-4"
- Underside of Beam: 13'-2"
- Underside of Girder: 12'-10"

MEASUREMENTS

Length: 202'-6" Width: 66'-8"

FEATURES

- Third Avenue building frontage / signage
- Original post office windows at entrance



Privately owned streets ideal for festivals, street fairs, food truck events or filming purposes. Industry City has the right to close 33rd - 36th Street to through traffic.

SPACE SIZE

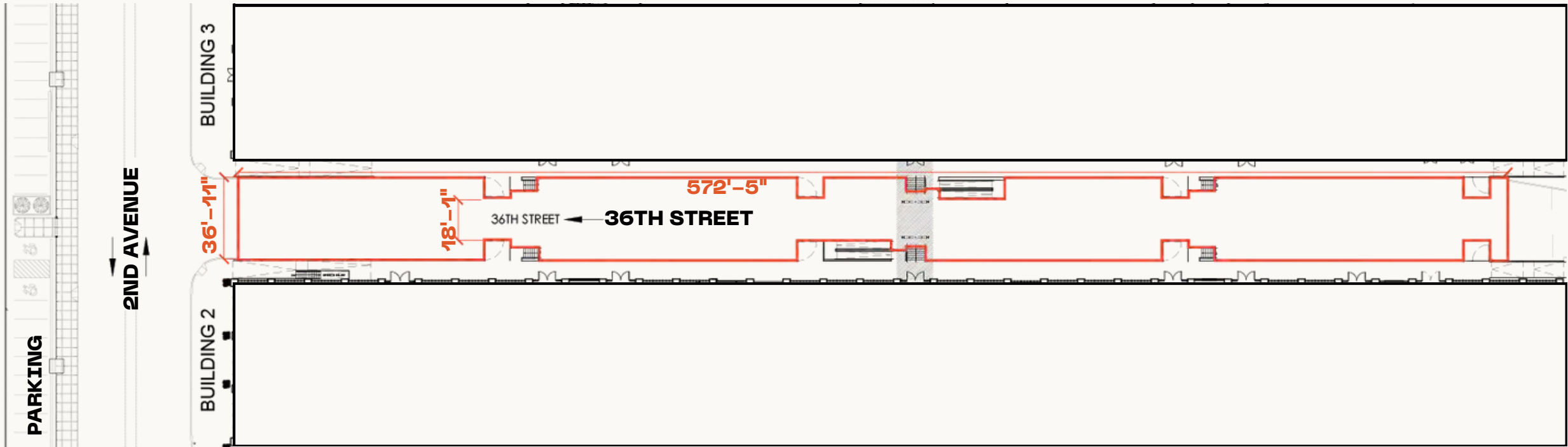
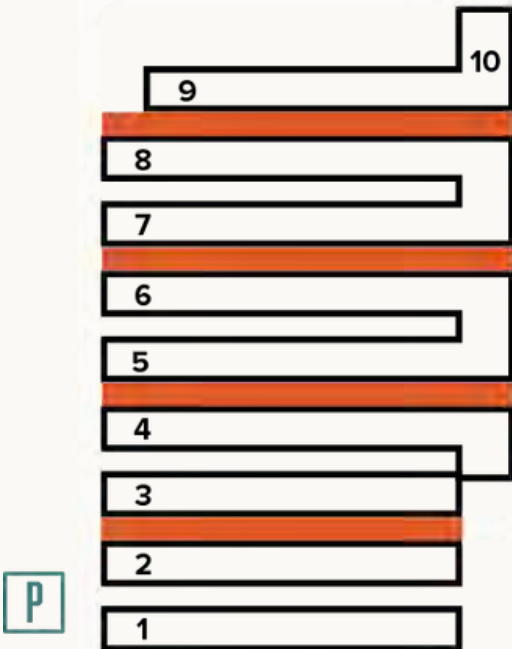
20,430 USF

MEASUREMENTS

Length: 572'-5" Width: 36'-11"

FEATURES

- Elevated sidewalks and loading docks
- Opportunity to fully close street between 2nd avenue and 3rd avenue
- Power tie-ins possible
- Water spigot access
- Some streets cobblestones





INDUSTRY CITY

With a range of multi-purpose rental spaces, you're never limited by size, style or season. From corporate conferences, and employee appreciation events, to pop-ups, and weddings, IC has you covered all year long.

EMAIL IC-EVENTS@INDUSTRYCITY.COM

